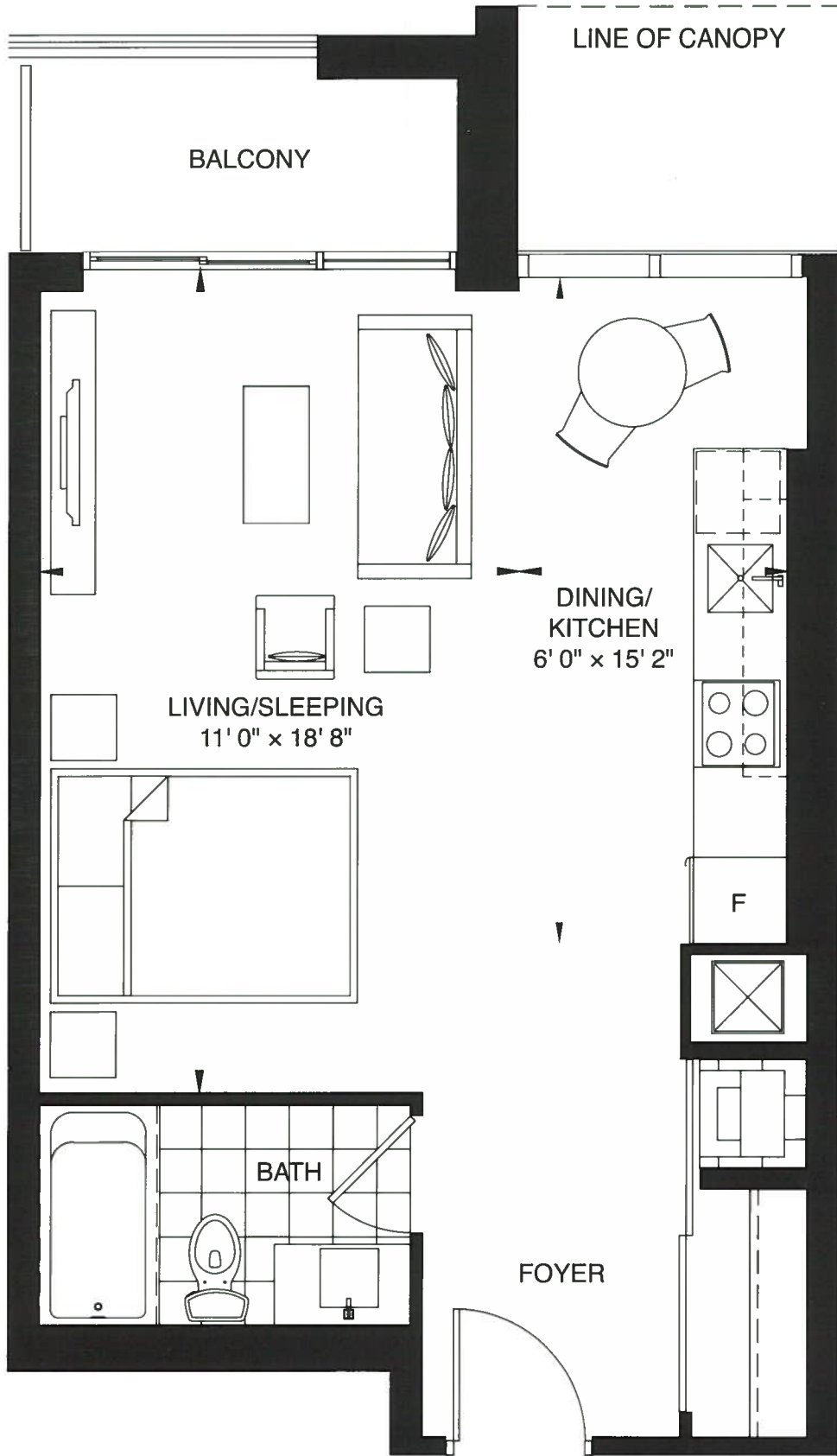


502 sq.ft. | Studio

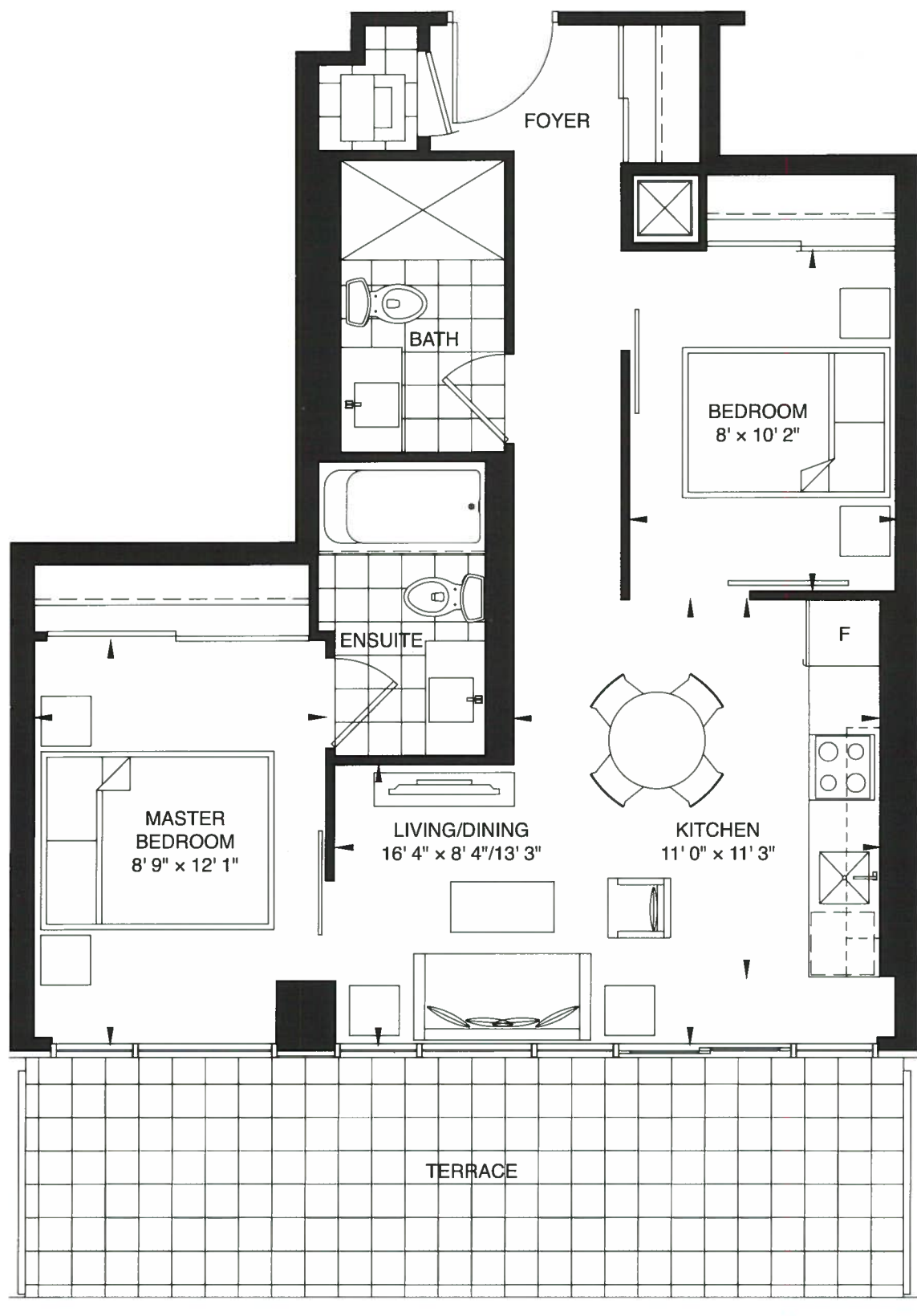


2ND FLOOR



BARTON

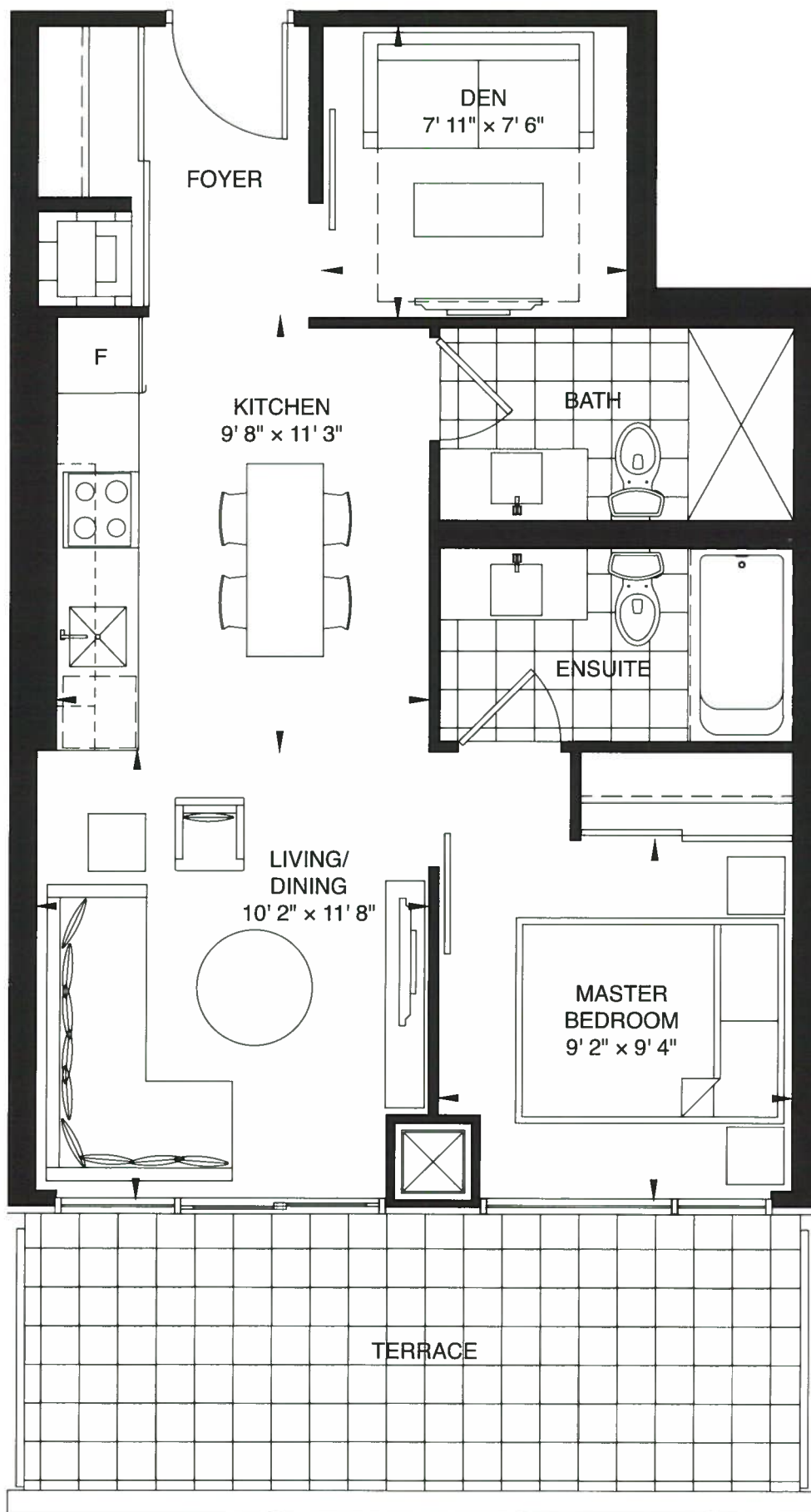
Prices and specifications subject to change without notice. E.O.E. The dimensions shown on this plan are approximate only. Actual useable floor space within the unit may vary from any stated floor areas or dimensions on this plan. For more information on the method used for calculating the floor area of any unit, reference should be made to Builder Bulletin No. 22 published by Tarron.



2ND FLOOR



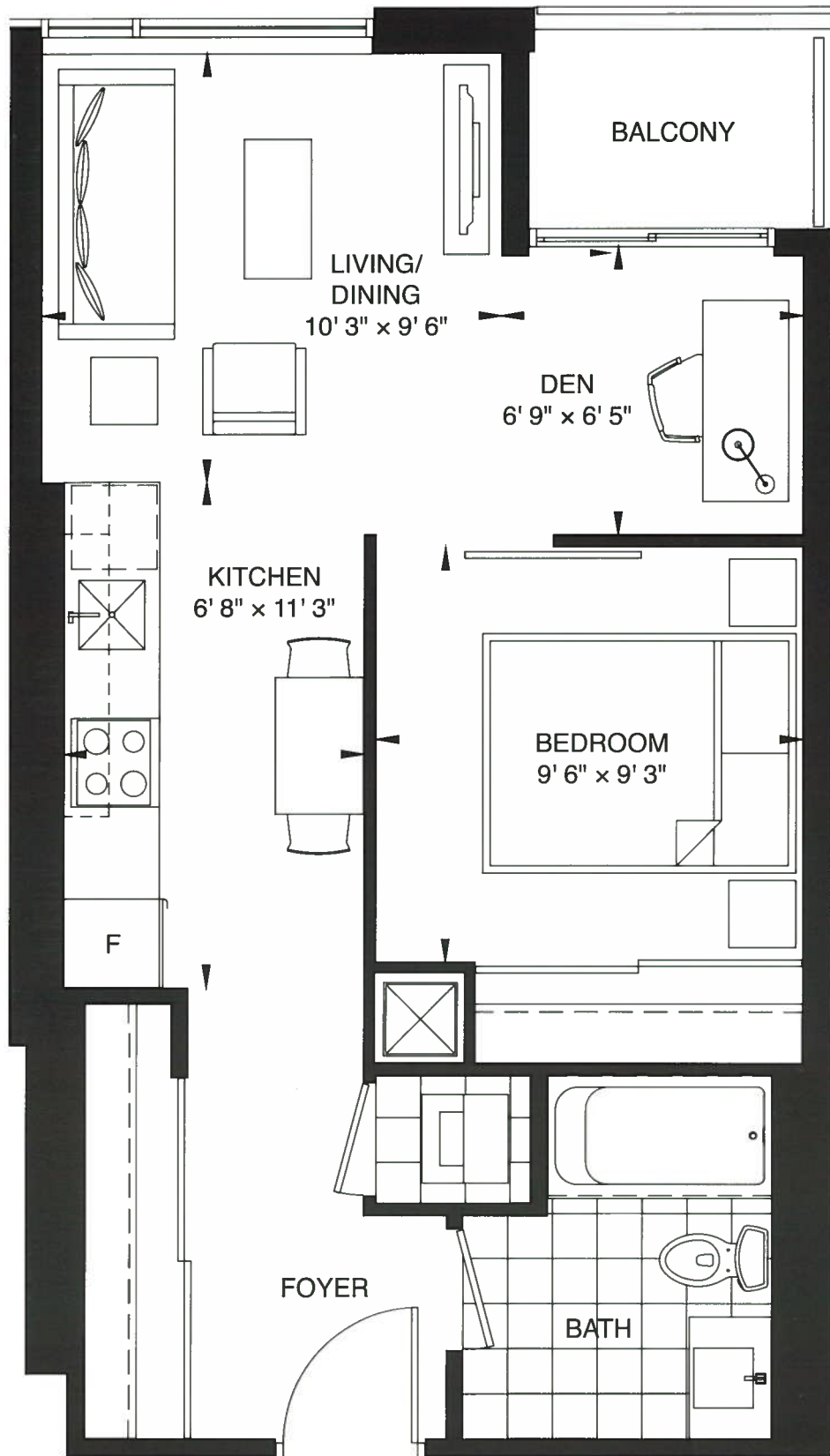
Prices and specifications subject to change without notice. E & O E. The dimensions shown on this plan are approximate only. Actual useable floor space within the unit may vary from any stated floor areas or dimensions on this plan. For more information on the method used for calculating the floor area of any unit, reference should be made to Builder Bulletin No. 22 published by Tarion.



2ND FLOOR



Prices and specifications subject to change without notice. E. & O. E. The dimensions shown on this plan are approximate only. Actual useable floor space within the unit may vary from any stated floor areas or dimensions on this plan. For more information on the method used for calculating the floor area of any unit, reference should be made to Builder Bulletin No. 22 published by Tarion.



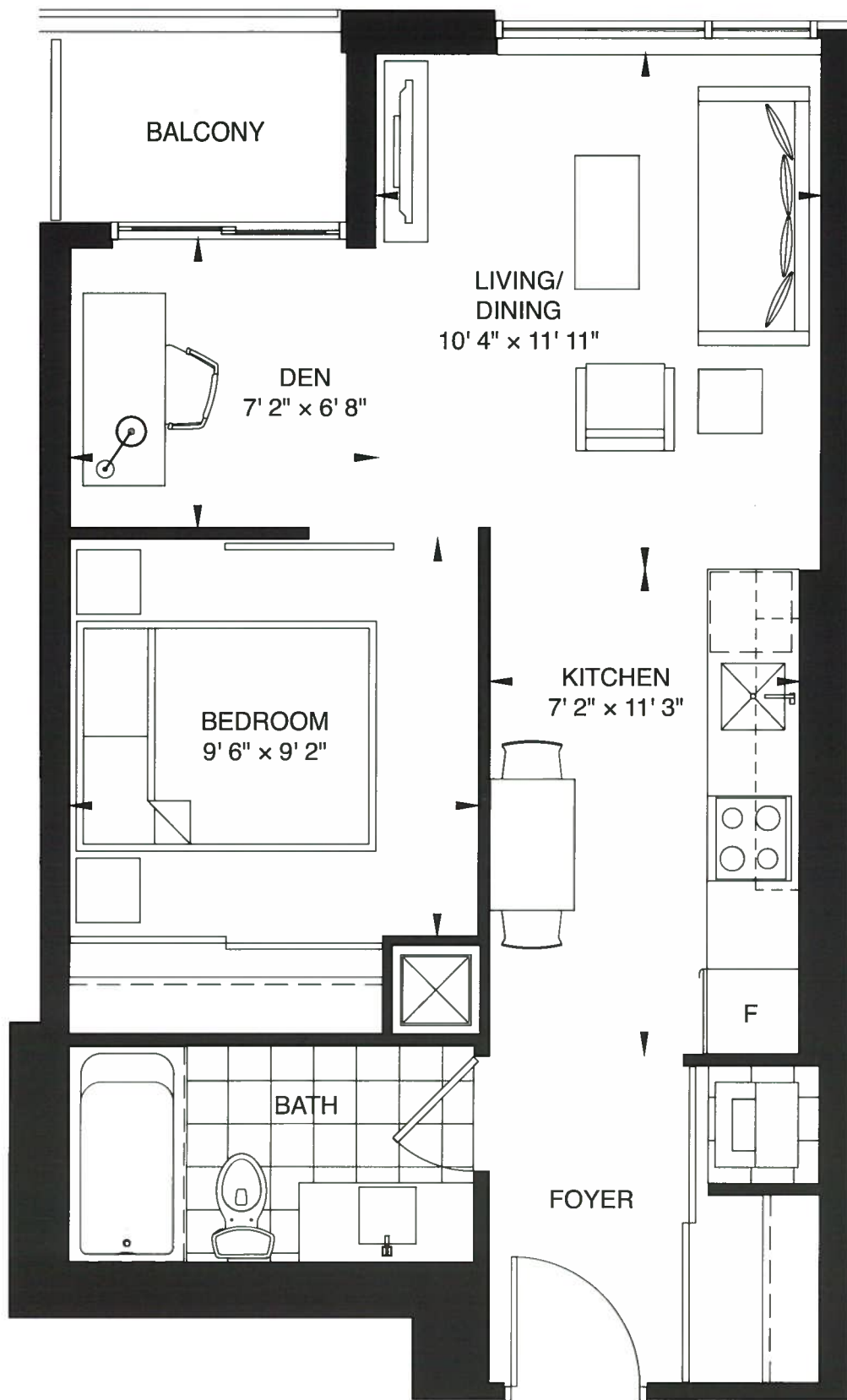
2ND FLOOR



LOWER TYPICAL FLOOR



Prices and specifications subject to change without notice. E.O.E. The dimensions shown on this plan are approximate only. Actual useable floor space within the unit may vary from any stated floor areas or dimensions on this plan. For more information on the method used for calculating the floor area of any unit, reference should be made to Builder Bulletin No. 22 published by Tarion.

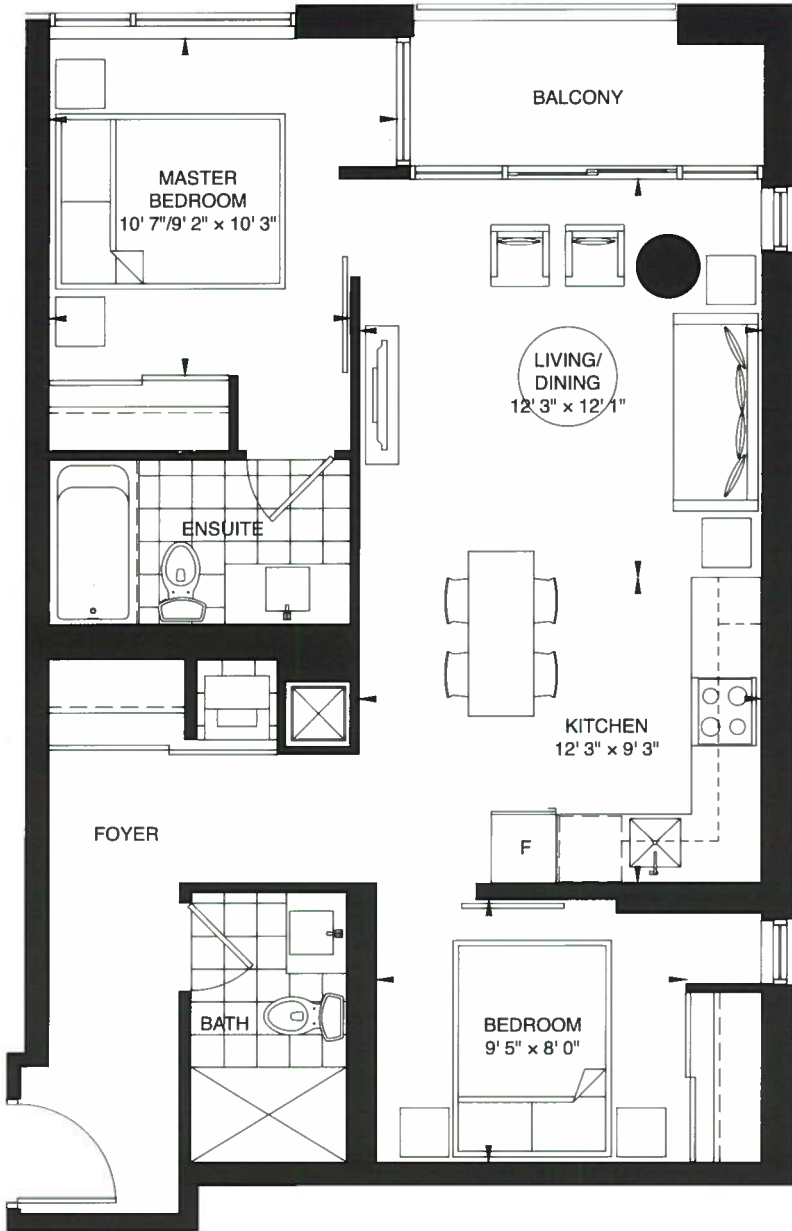


LOWER TYPICAL FLOOR

Prices and specifications subject to change without notice. E.O.E. The dimensions shown on this plan are approximate only. Actual useable floor space within the unit may vary from any stated floor area or dimensions on this plan. For more information on the method used for calculating the floor area of any unit, reference should be made to Builder Bulletin No. 22 published by Tarion.

774 sq.ft. | 2 Bedroom

MORRISON



PERIMETER OBSCURE
GLASS WINDOW
CONDITION AT FLOORS
9, 10

PERIMETER OBSCURE
GLASS WINDOW
CONDITION AT FLOORS
5, 6

PERIMETER OBSCURE
GLASS WINDOW
CONDITION AT FLOORS
3, 4, 7, 8

PERIMETER OBSCURE
GLASS WINDOW
CONDITION AT FLOORS
3, 4, 5, 8, 9, 10

PERIMETER OBSCURE
GLASS WINDOW
CONDITION AT FLOORS
6, 7

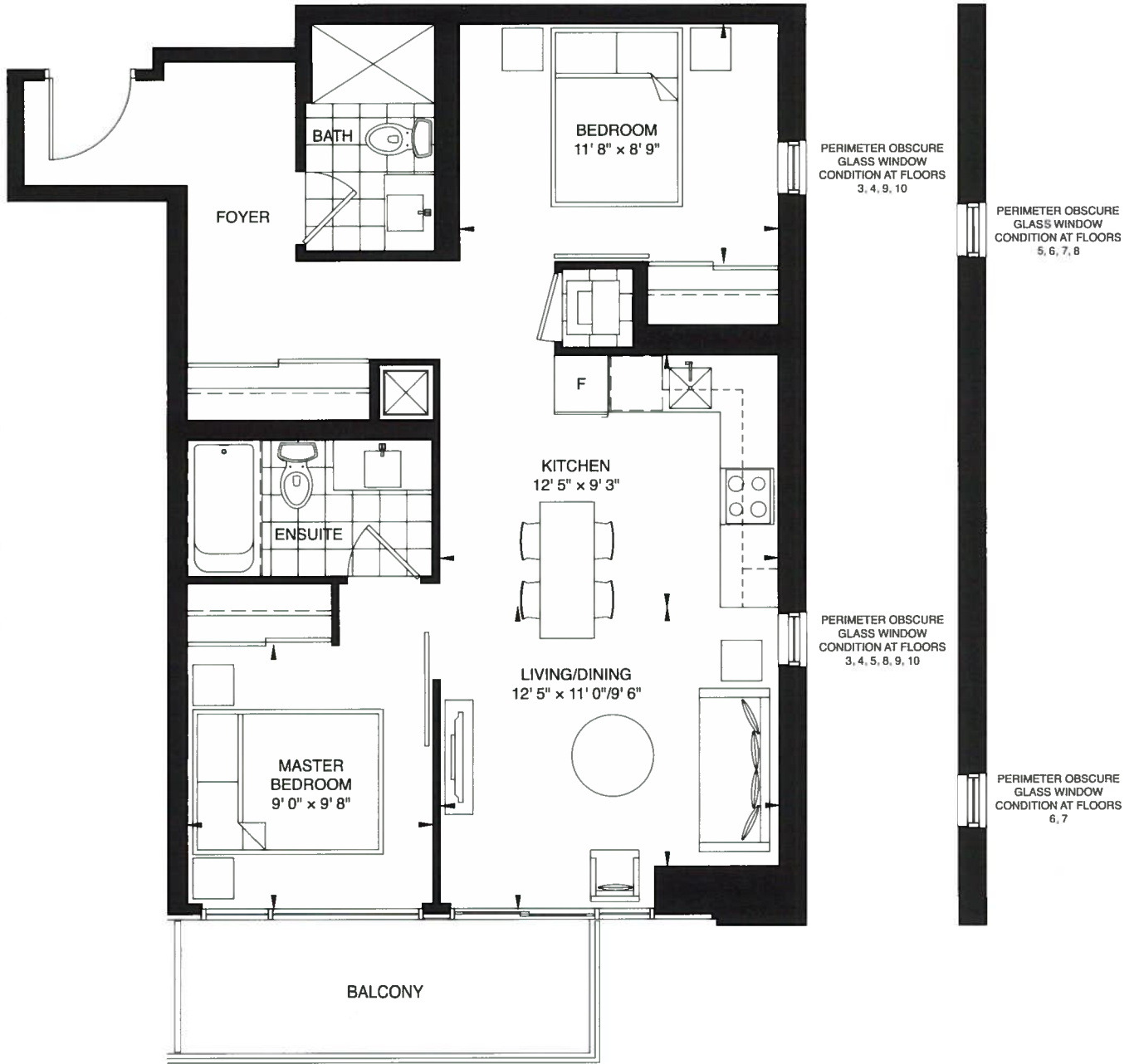


LOWER TYPICAL FLOOR

Prices and specifications subject to change without notice. E & O. E. The dimensions shown on this plan are approximate only. Actual useable floor space within the unit may vary from any stated floor areas or dimensions on this plan. For more information on the method used for calculating the floor area of any unit, reference should be made to Builder Bulletin No. 22 published by Tarron.

791 sq.ft. | 2 Bedroom

ADELAIDE

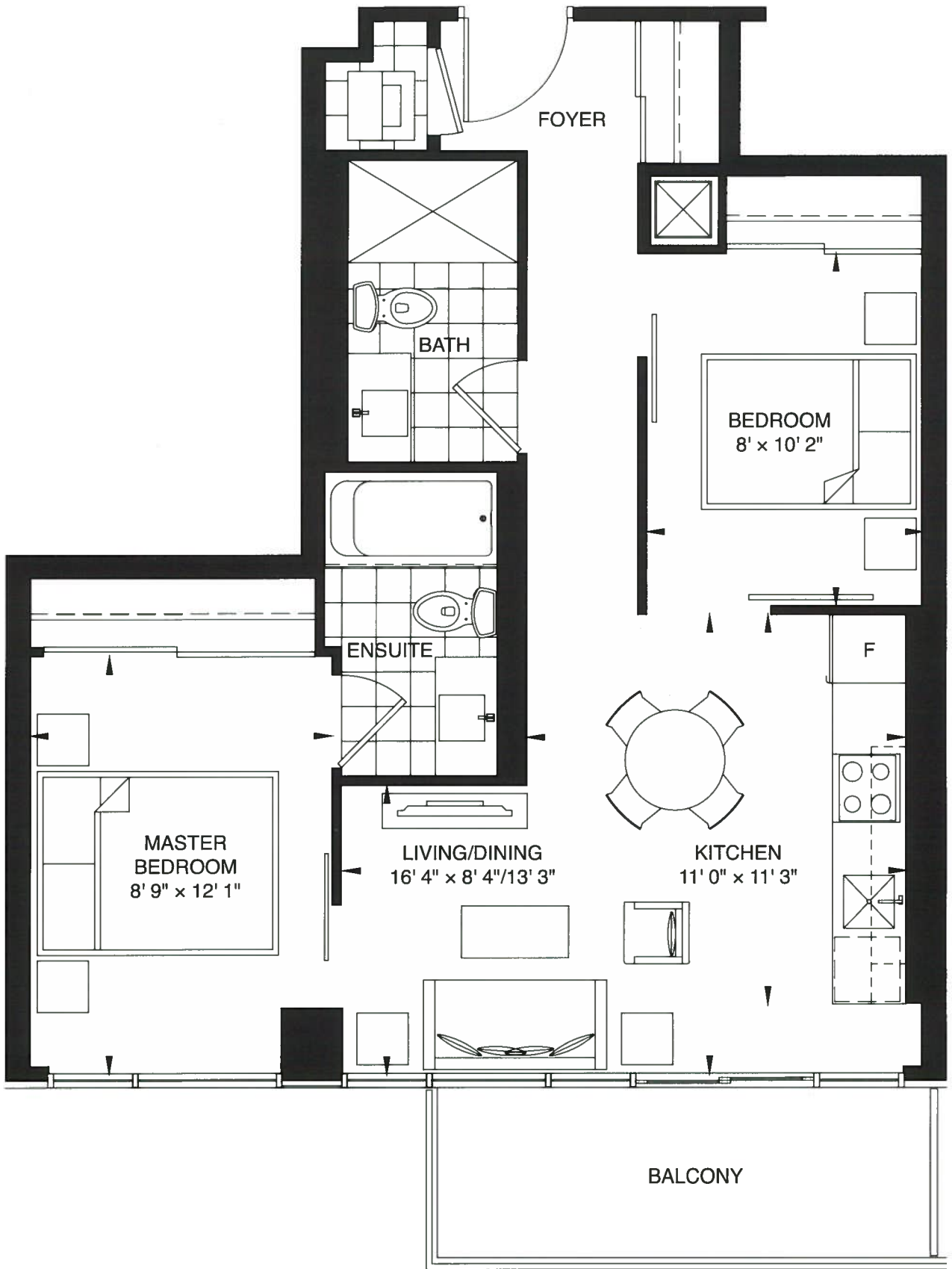


LOWER TYPICAL FLOOR

Prices and specifications subject to change without notice. E & O E. The dimensions shown on this plan are approximate only. Actual useable floor space within the unit may vary from any stated floor areas or dimensions on this plan. For more information on the method used for calculating the floor area of any unit, reference should be made to Builder Bulletin No. 22 published by Tarron.

672 sq.ft. | 2 Bedroom

CAMERON

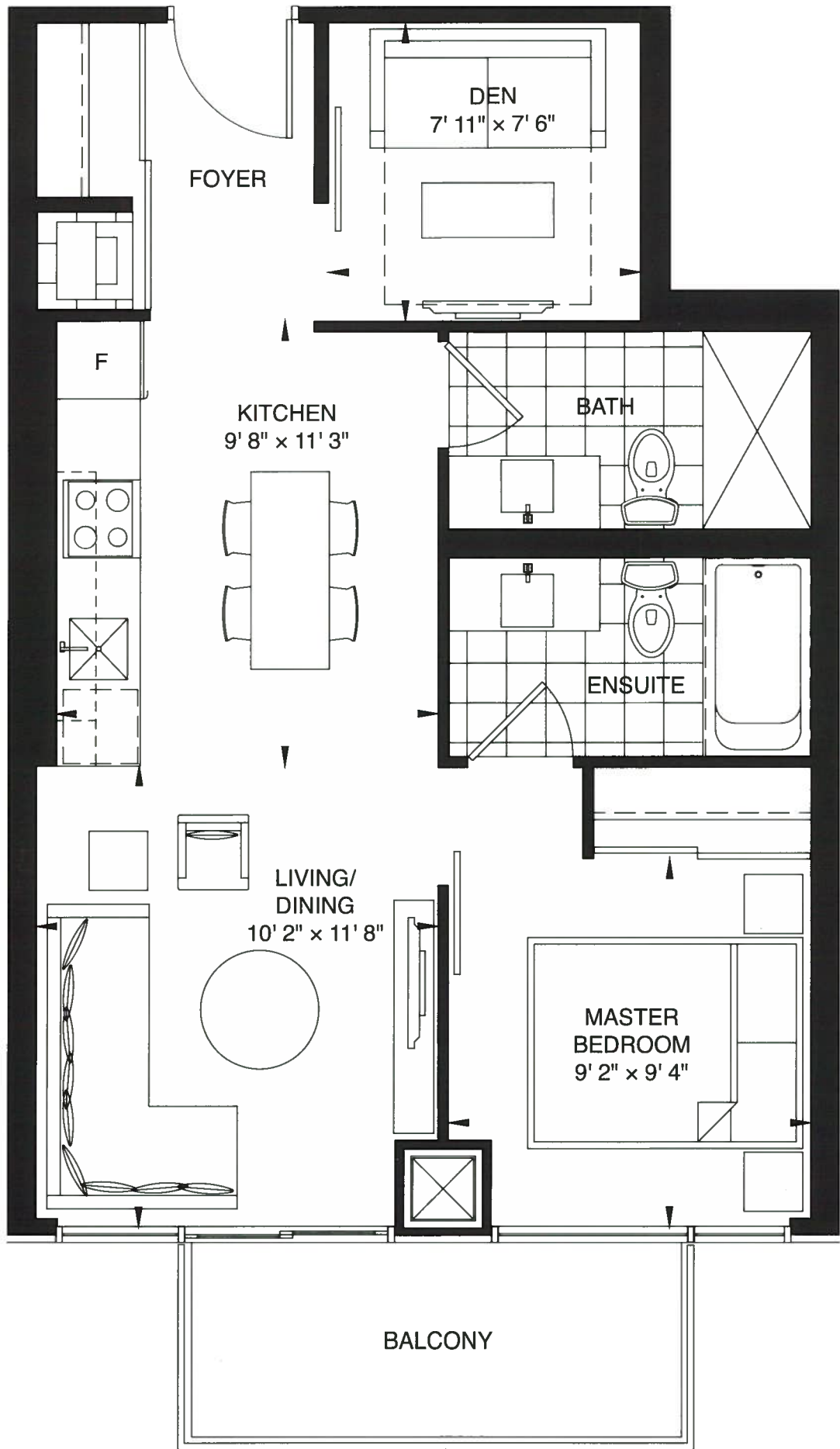


LOWER TYPICAL FLOOR

Prices and specifications subject to change without notice. E. & O. E. The dimensions shown on this plan are approximate only. Actual useable floor space within the unit may vary from any stated floor areas or dimensions on this plan. For more information on the method used for calculating the floor area of any unit, reference should be made to Builder Bulletin No. 22 published by Tarion.

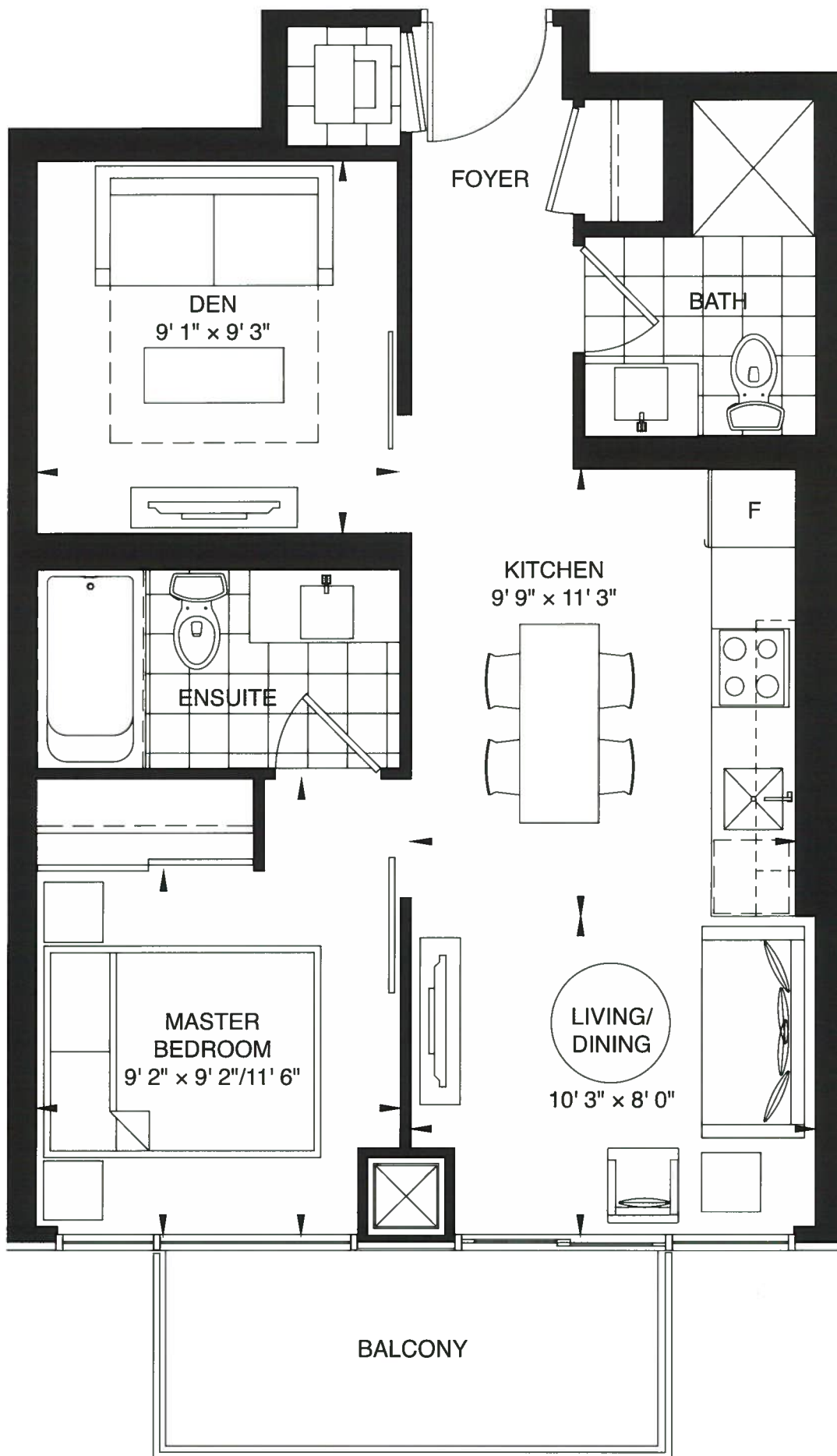
614 sq.ft. | 1 Bedroom + Den

AUGUSTA



LOWER TYPICAL FLOOR

Prices and specifications subject to change without notice. E. & O. E. The dimensions shown on this plan are approximate only. Actual useable floor space within the unit may vary from any stated floor areas or dimensions on this plan. For more information on the method used for calculating the floor area of any unit, reference should be made to Builder Bulletin No. 22 published by Tarron.



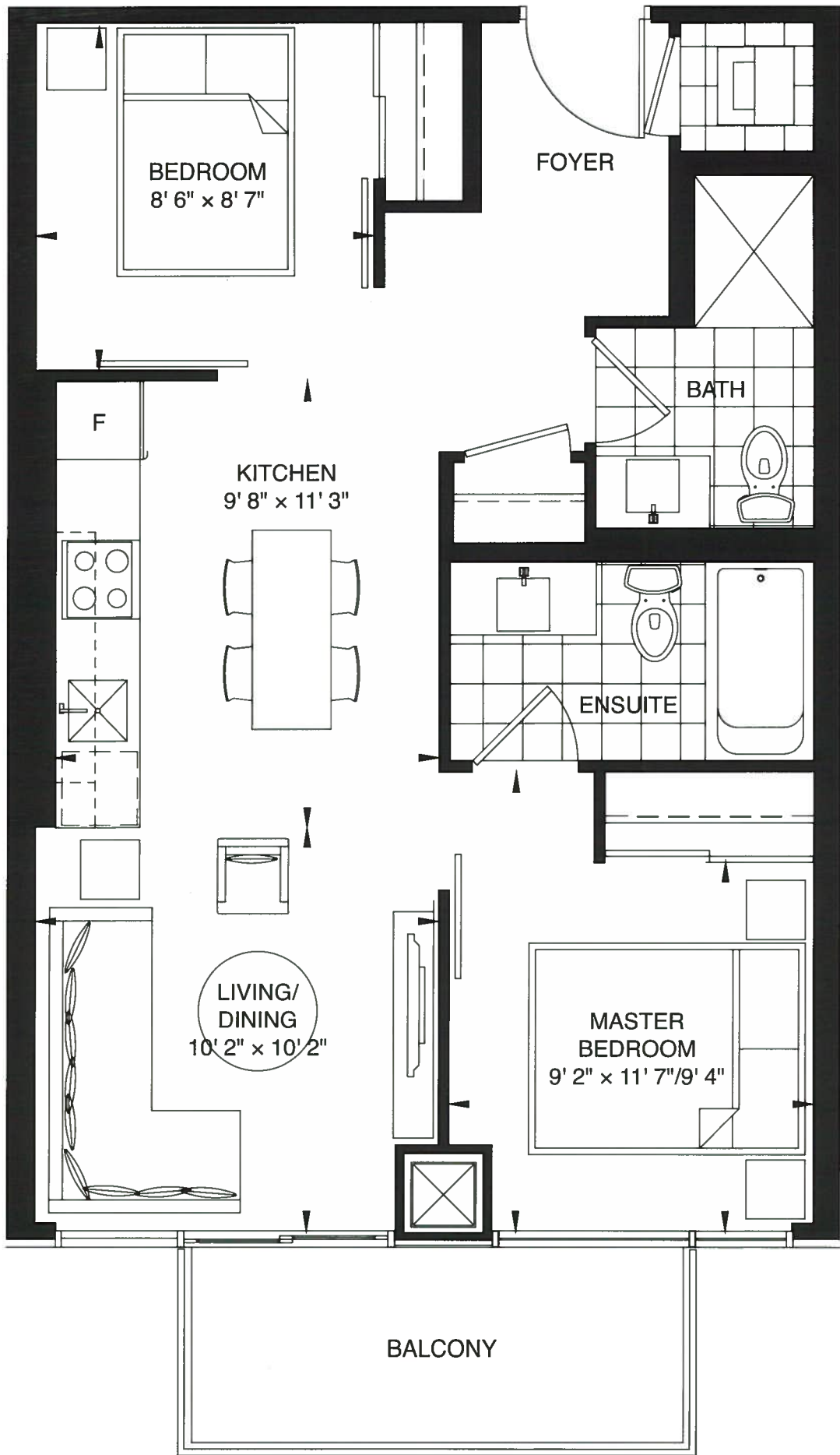
LOWER TYPICAL FLOOR



Prices and specifications subject to change without notice. E & O E. The dimensions shown on this plan are approximate only. Actual useable floor space within the unit may vary from any stated floor areas or dimensions on this plan. For more information on the method used for calculating the floor area of any unit, reference should be made to Builder Bulletin No. 22 published by Tarion.

639 sq.ft. | 2 Bedroom

CHARLOTTE

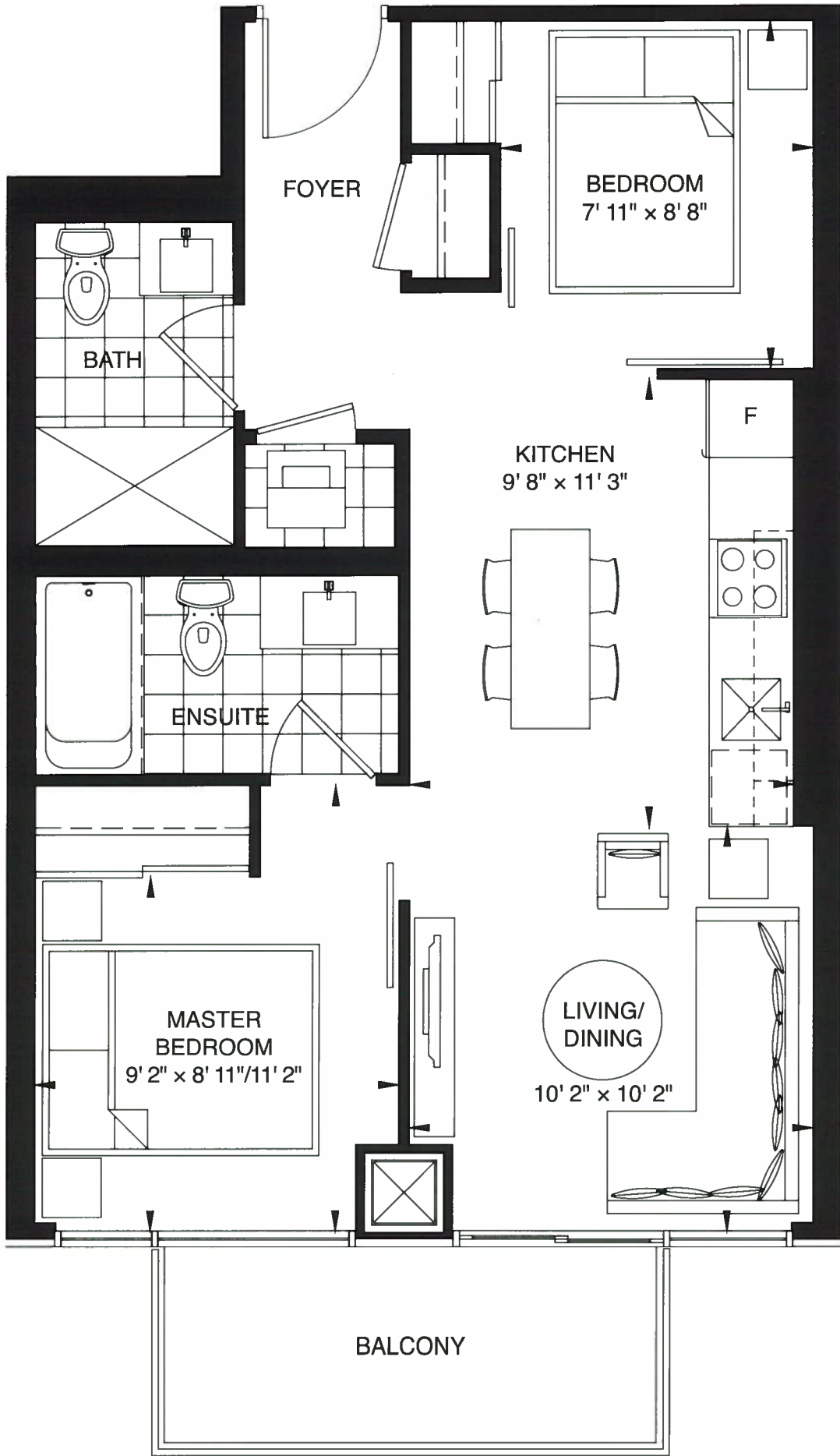


LOWER TYPICAL FLOOR

Prices and specifications subject to change without notice. E & O E. The dimensions shown on this plan are approximate only. Actual usable floor space within the unit may vary from any stated floor areas or dimensions on this plan. For more information on the method used for calculating the floor area of any unit, reference should be made to Builder Bulletin No. 22 published by Tarrion.

614 sq.ft. | 2 Bedroom

WIDMER



LOWER TYPICAL FLOOR

Prices and specifications subject to change without notice. E.&O.E. The dimensions shown on this plan are approximate only. Actual useable floor space within the unit may vary from any stated floor areas or dimensions on this plan. For more information on the method used for calculating the floor area of any unit, reference should be made to Builder Bulletin No. 22 published by Tarron.

790 sq.ft. | 2 Bedroom

SULLIVAN

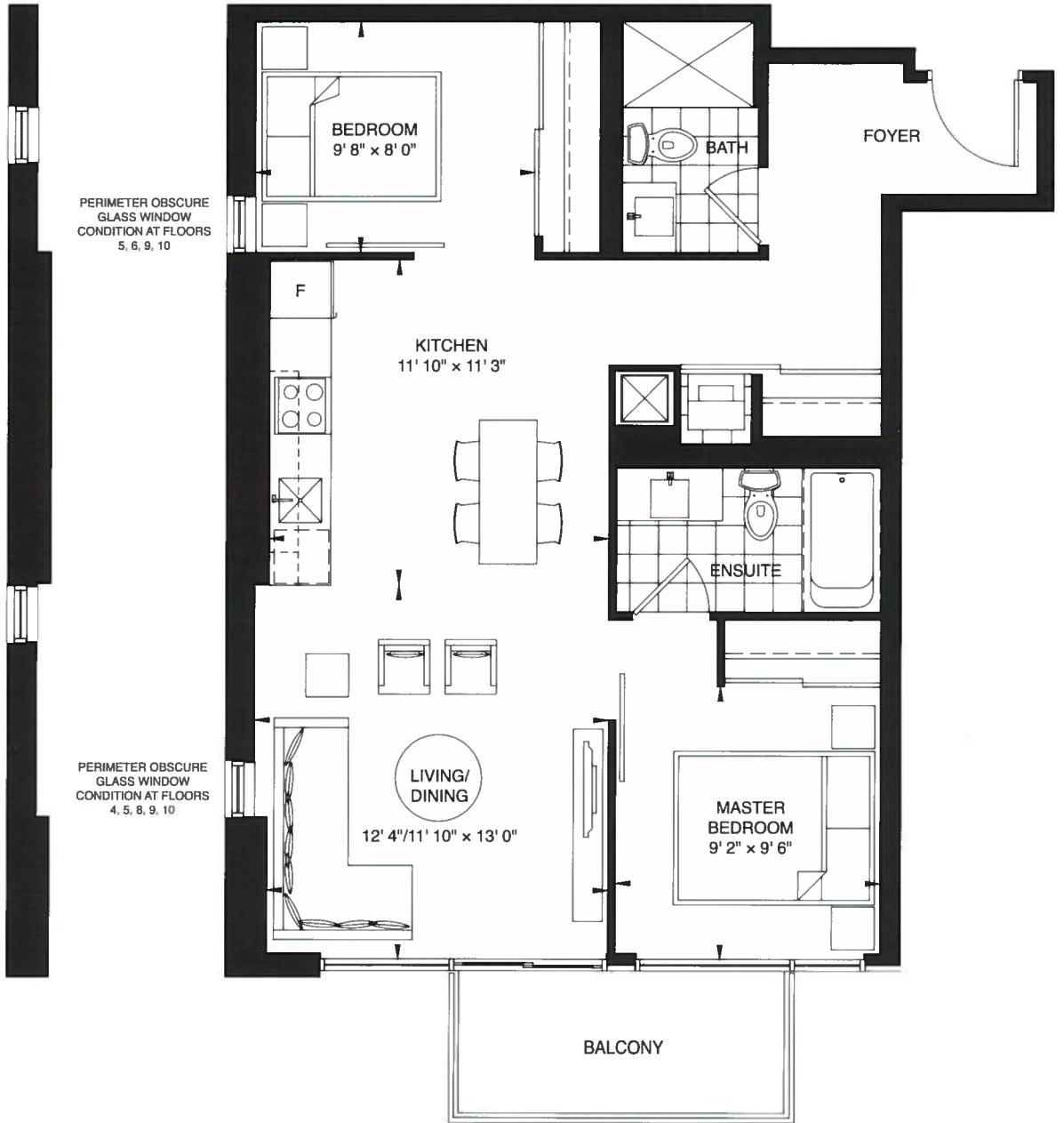


PERIMETER OBSCURE
GLASS WINDOW
CONDITION AT FLOORS
3, 4, 7, 8

PERIMETER OBSCURE
GLASS WINDOW
CONDITION AT FLOORS
5, 6, 9, 10

PERIMETER OBSCURE
GLASS WINDOW
CONDITION AT FLOORS
3, 6, 7

PERIMETER OBSCURE
GLASS WINDOW
CONDITION AT FLOORS
4, 5, 8, 9, 10



LOWER TYPICAL FLOOR

Prices and specifications subject to change without notice. E. & O. E. The dimensions shown on this plan are approximate only. Actual useable floor space within the unit may vary from any stated floor areas or dimensions on this plan. For more information on the method used for calculating the floor area of any unit, reference should be made to Builder Bulletin No. 22 published by Tarion.

769 sq.ft. | 2 Bedroom

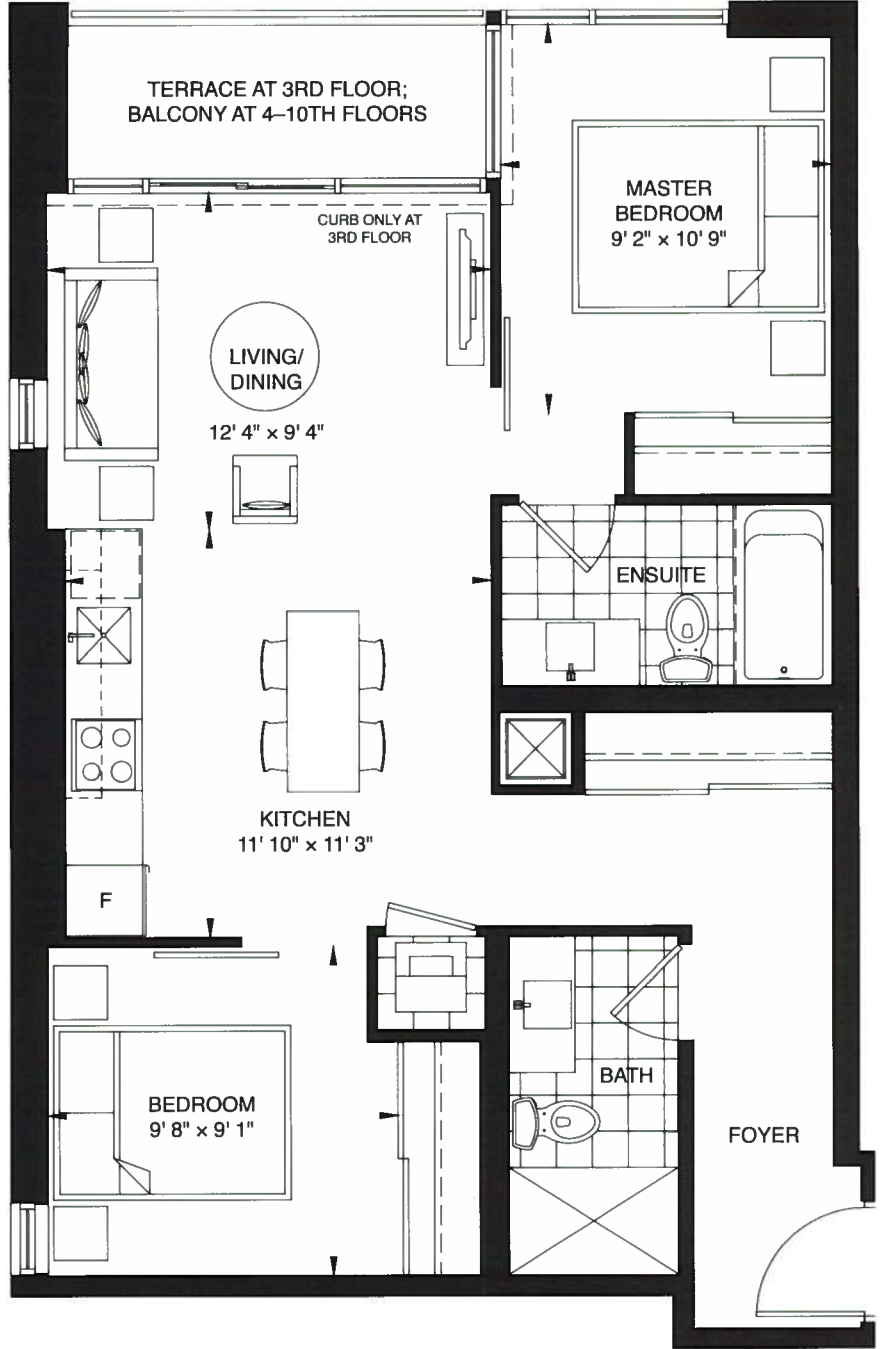
CRAWFORD

PERIMETER OBSCURE
GLASS WINDOW
CONDITION AT FLOORS
5, 6, 7, 8

PERIMETER OBSCURE
GLASS WINDOW
CONDITION AT FLOORS
3, 6, 7

PERIMETER OBSCURE
GLASS WINDOW
CONDITION AT FLOORS
3, 4, 9, 10

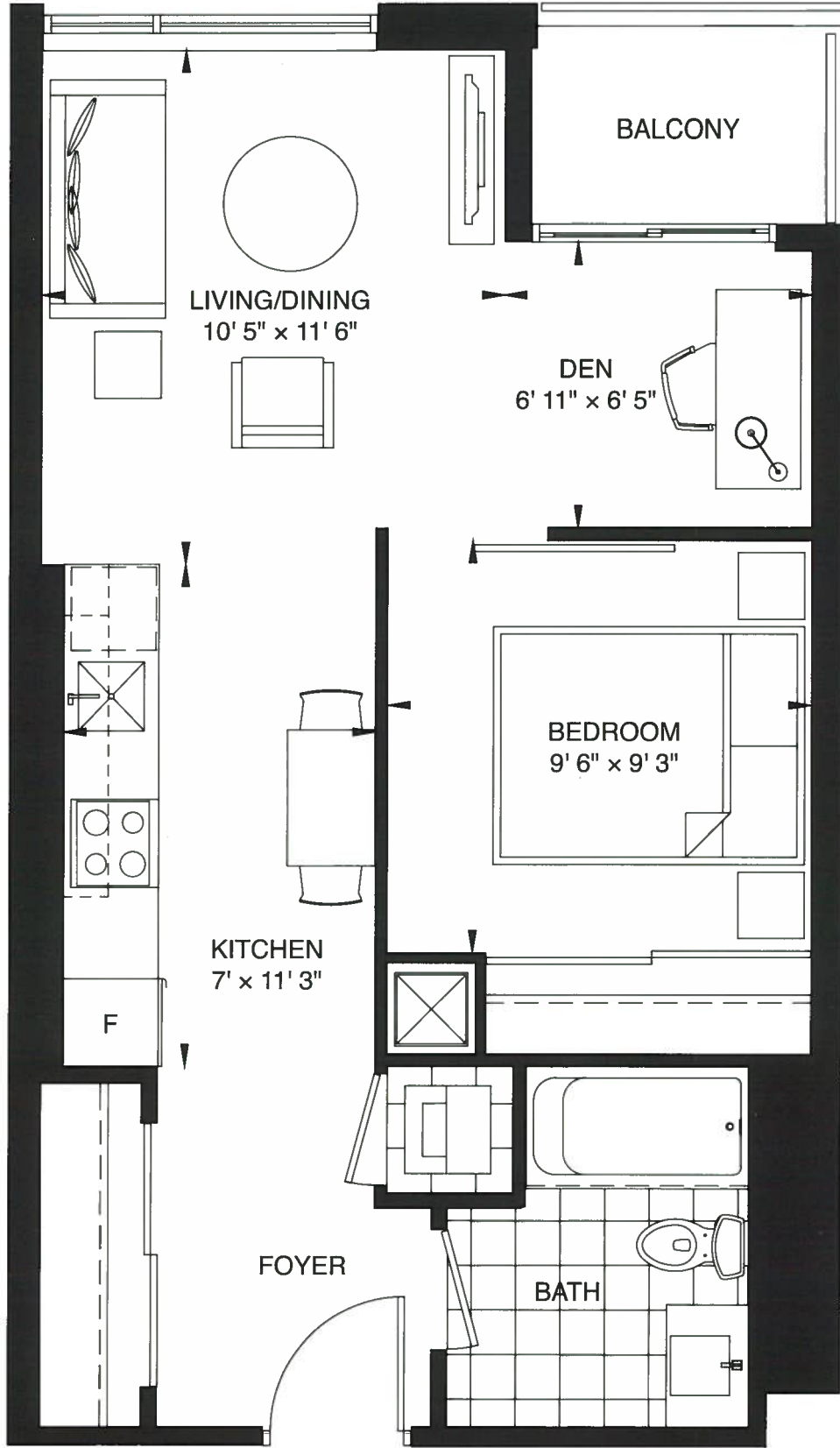
PERIMETER OBSCURE
GLASS WINDOW
CONDITION AT FLOORS
4, 5, 8, 9, 10



LOWER TYPICAL FLOOR



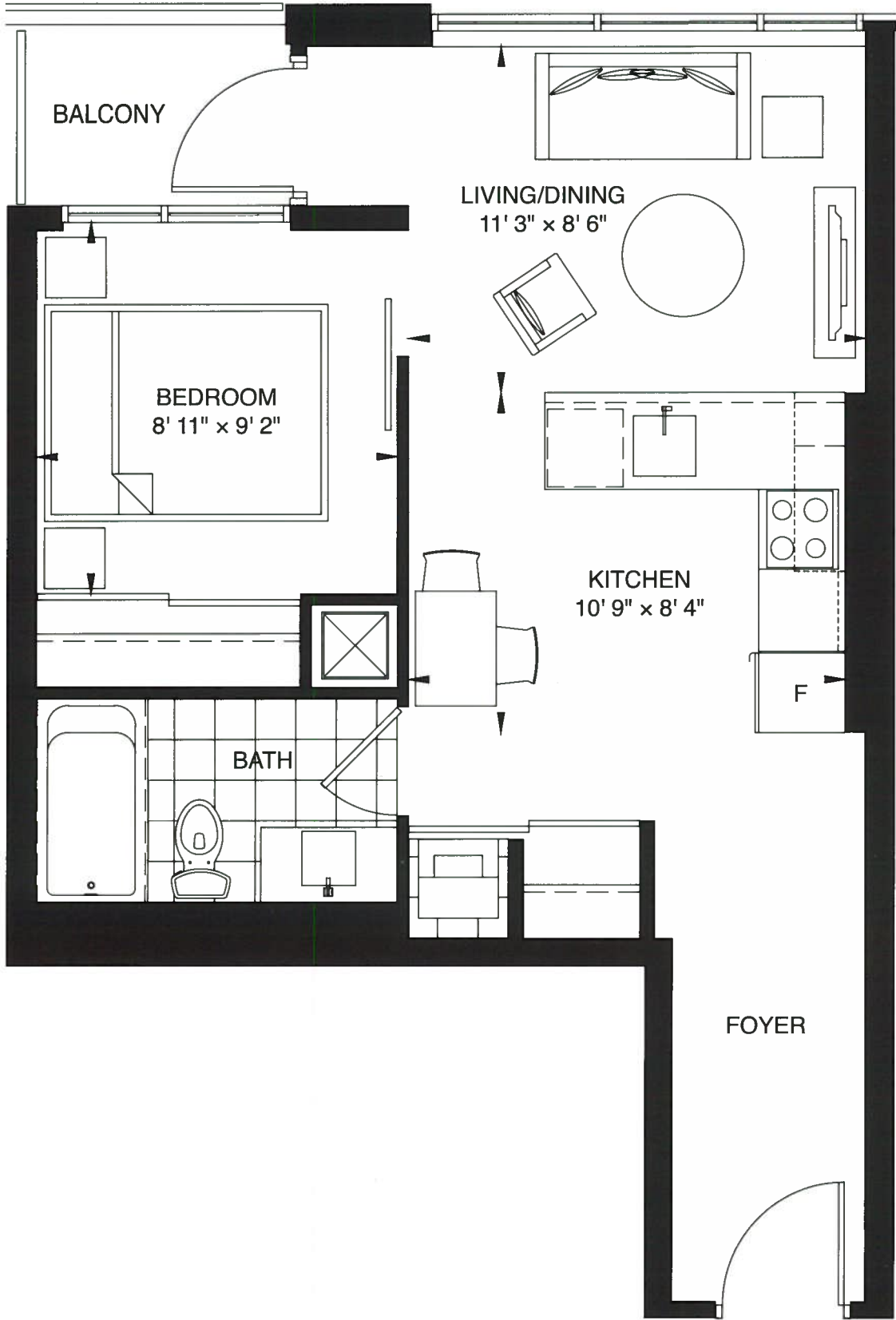
Prices and specifications subject to change without notice. E.S.O.E. The dimensions shown on this plan are approximate only. Actual useable floor space within the unit may vary from any stated floor areas or dimensions on this plan. For more information on the method for calculating the floor area of any unit, reference should be made to Builder Bulletin No. 22 published by Tarion.



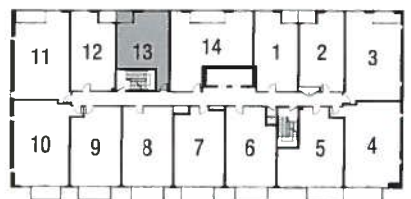
LOWER TYPICAL FLOOR



516 sq.ft. | 1 Bedroom



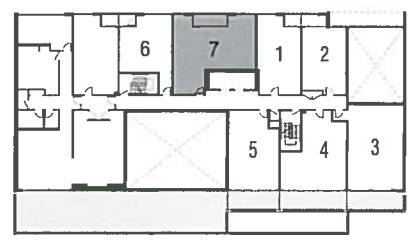
2ND FLOOR



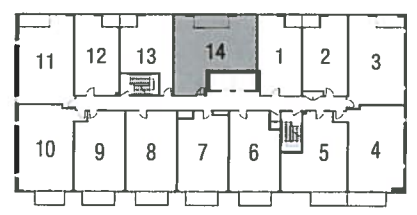
LOWER TYPICAL FLOOR



Prices and specifications subject to change without notice. E.O.E. The dimensions shown on this plan are approximate only. Actual useable floor space within the unit may vary from any stated floor areas or dimensions on this plan. For more information on the method used for calculating the floor area of any unit, reference should be made to Builder Bulletin No. 22 published by Tarion.



2ND FLOOR



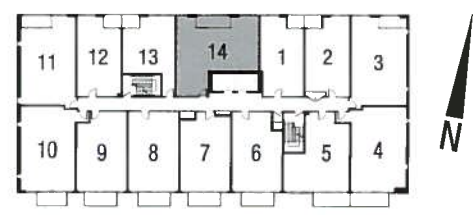
LOWER TYPICAL FLOOR



Prices and specifications subject to change without notice. E.O.E. The dimensions shown on this plan are approximate only. Actual useable floor space within the unit may vary from any stated floor areas or dimensions on this plan. For more information on the method used for calculating the floor area of any unit, reference should be made to Builder Bulletin No. 22 published by Tarion.

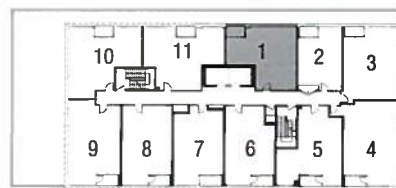
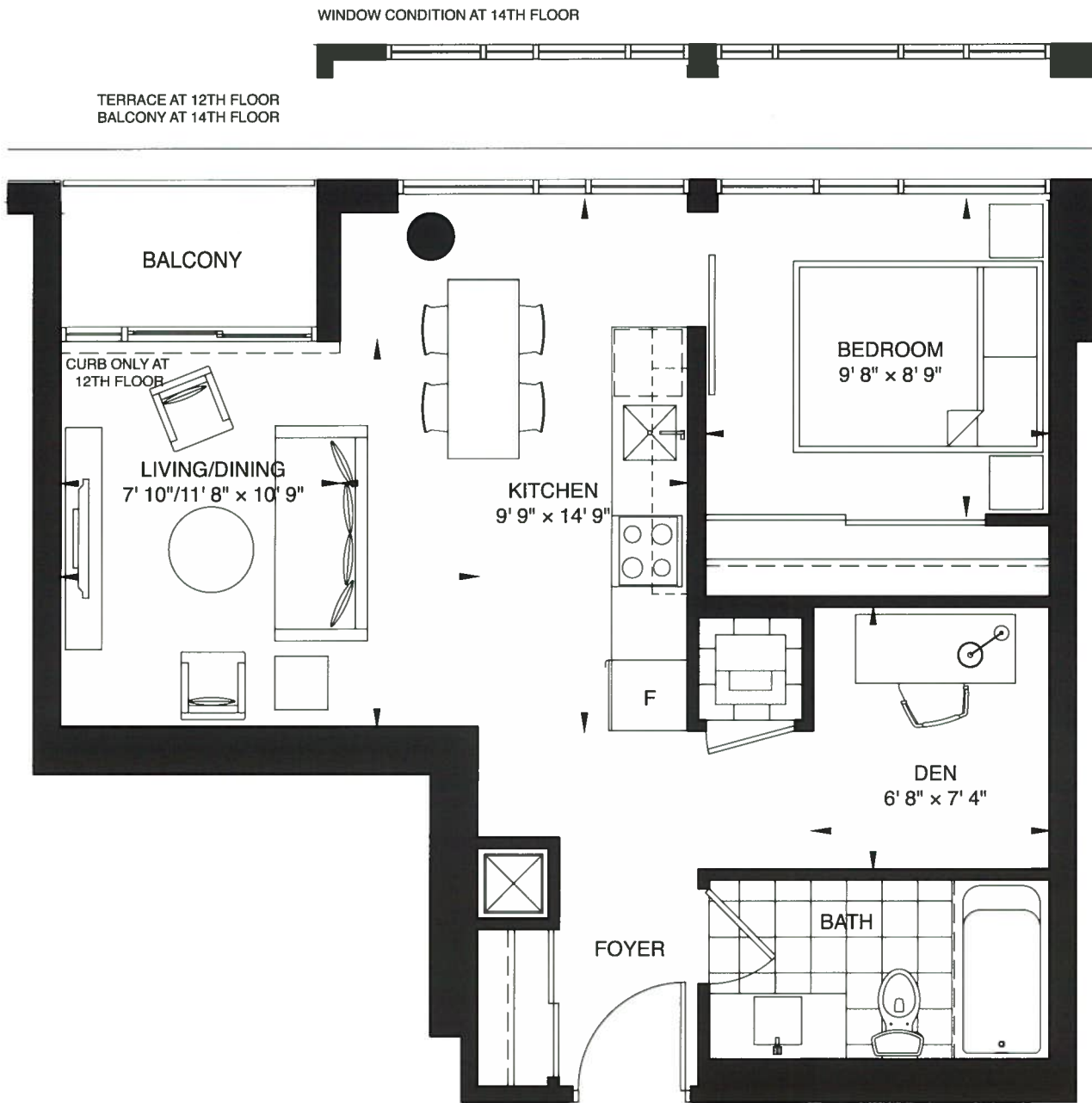


2ND FLOOR



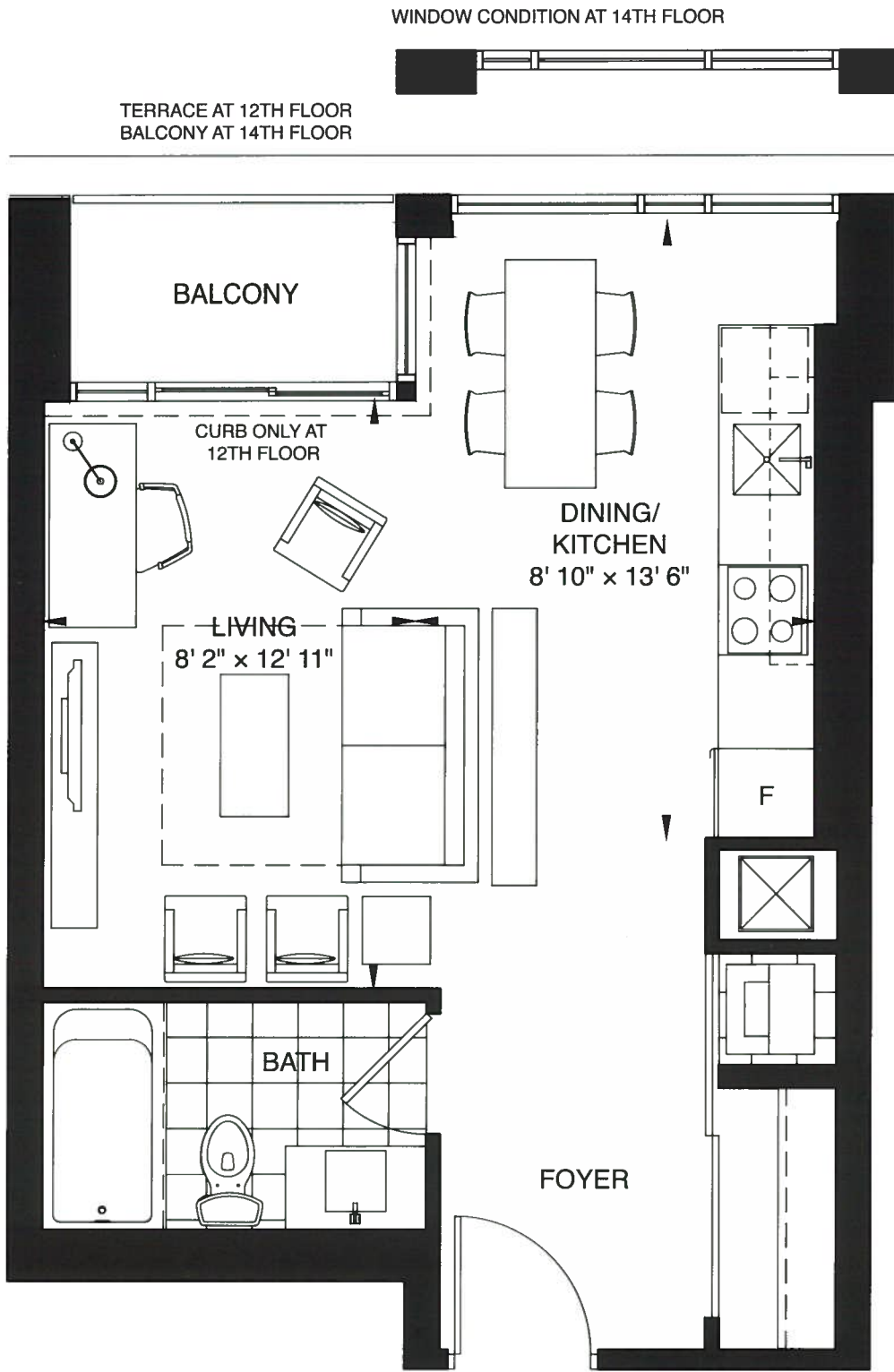
LOWER TYPICAL FLOOR

Prices and specifications subject to change without notice. E.O.E. The dimensions shown on this plan are approximate only. Actual useable floor space within the unit may vary from any stated floor areas or dimensions on this plan. For more information on the method used for calculating the floor area of any unit, reference should be made to Builder Bulletin No. 22 published by Tarion.



UPPER TYPICAL FLOOR





UPPER TYPICAL FLOOR



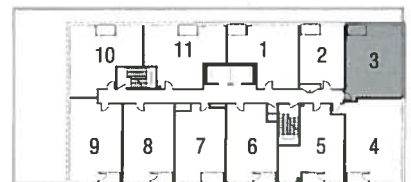
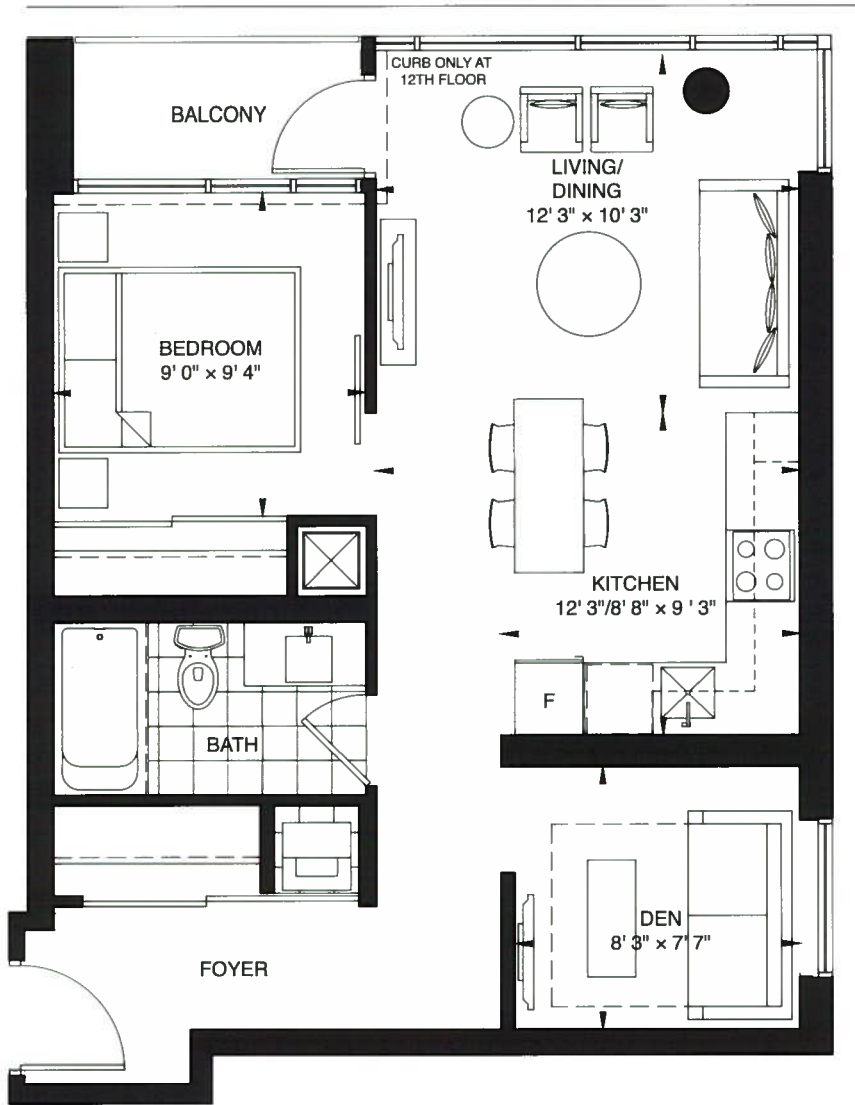
Prices and specifications subject to change without notice. E. & O.E. The dimensions shown on this plan are approximate only. Actual useable floor space within the unit may vary from any stated floor areas or dimensions on this plan. For more information on the method used for calculating the floor area of any unit, reference should be made to Bulletin No. 22 published by Tarrion.

637 sq.ft. | 1 Bedroom + Den

GERRARD

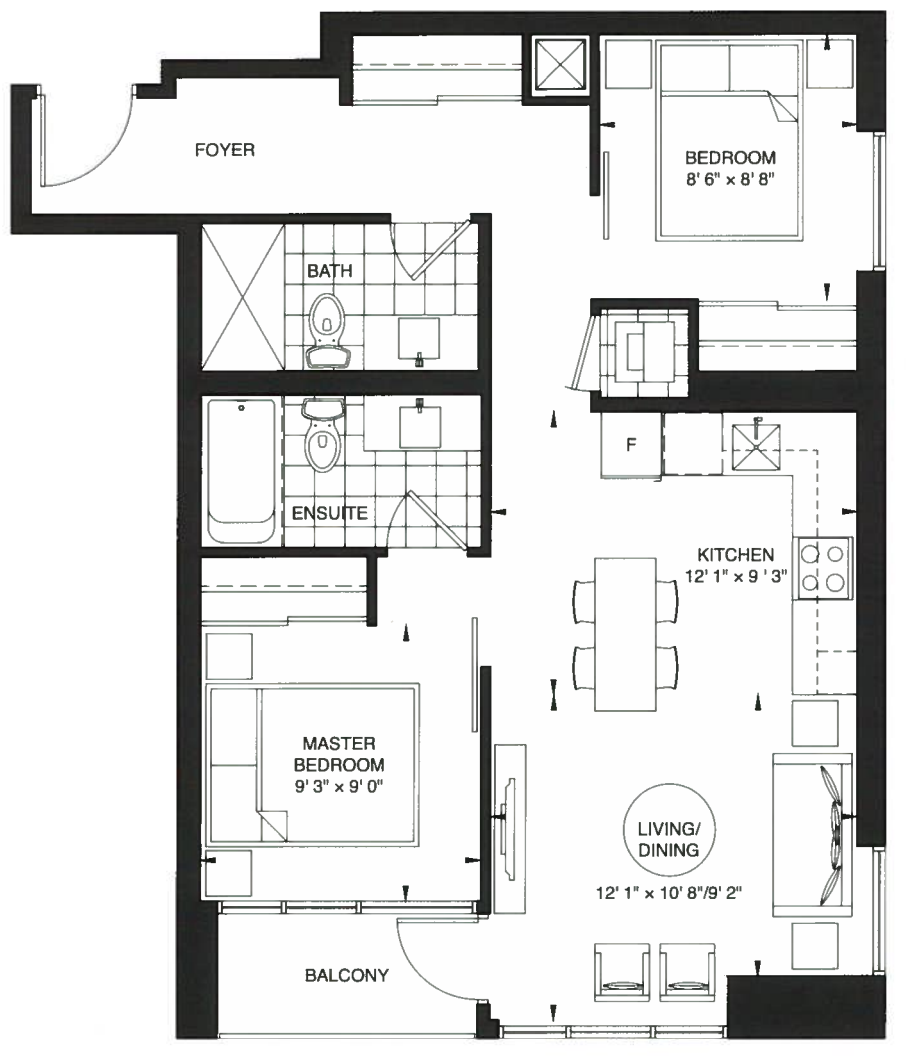


TERRACE AT 12TH FLOOR
BALCONY AT 14TH FLOOR



UPPER TYPICAL FLOOR

Prices and specifications subject to change without notice. E & O E. The dimensions shown on this plan are approximate only. Actual useable floor space within the unit may vary from any stated floor areas or dimensions on this plan. For more information on the method used for calculating the floor area of any unit, reference should be made to Builder Bulletin No. 22 published by Terron.



PERIMETER OBSCURE
GLASS WINDOWS
CONDITION AT 12TH FLOOR

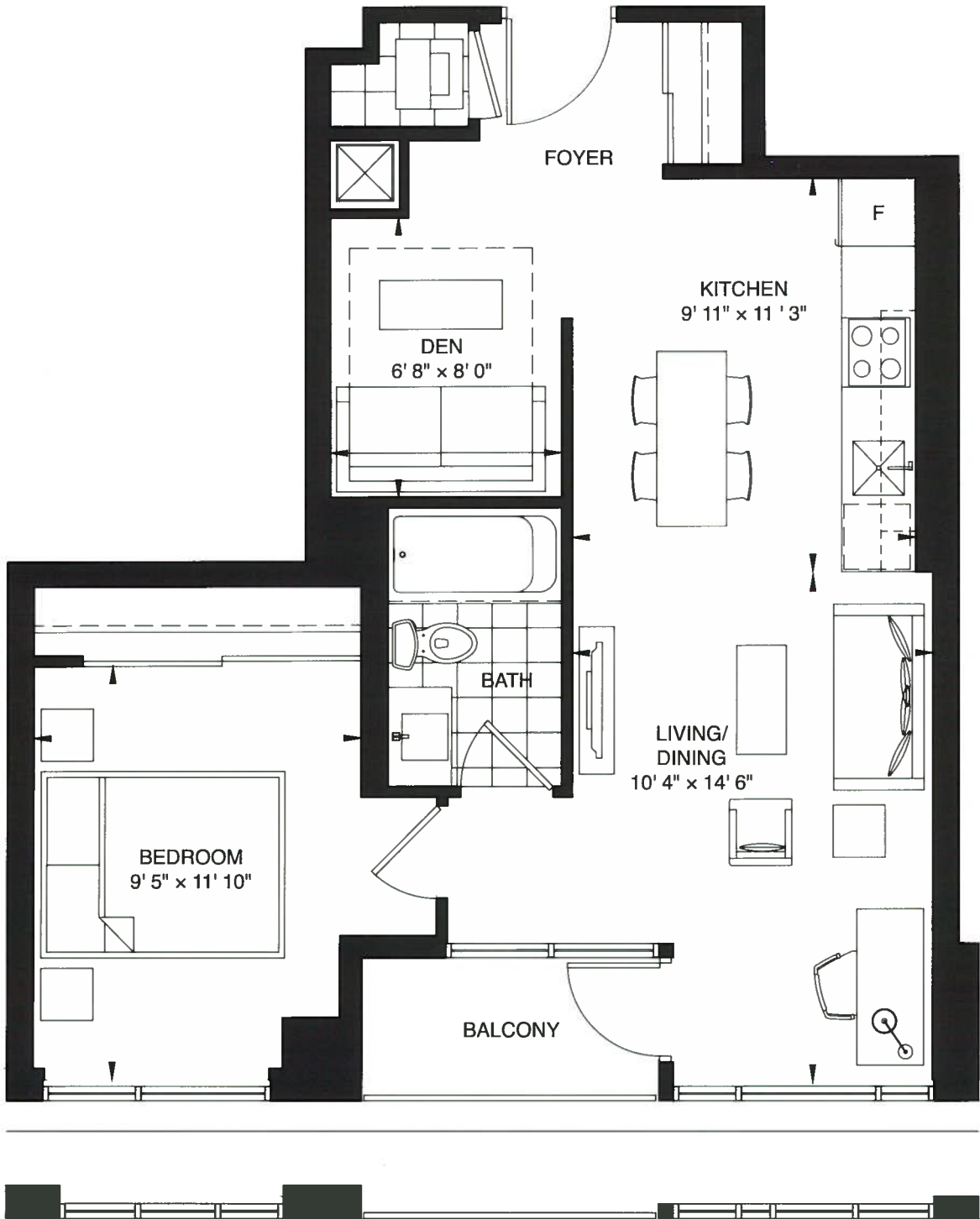
PERIMETER OBSCURE
GLASS WINDOWS
CONDITION AT 14TH FLOOR



UPPER TYPICAL FLOOR

Prices and specifications subject to change without notice. E.&O.E. The dimensions shown on this plan are approximate only. Actual useable floor space within the unit may vary from any stated floor areas or dimensions on this plan. For more information on the method used for calculating the floor area of any unit, reference should be made to Builder Bulletin No. 22 published by Tarion.

647 sq.ft. | 1 Bedroom + Den

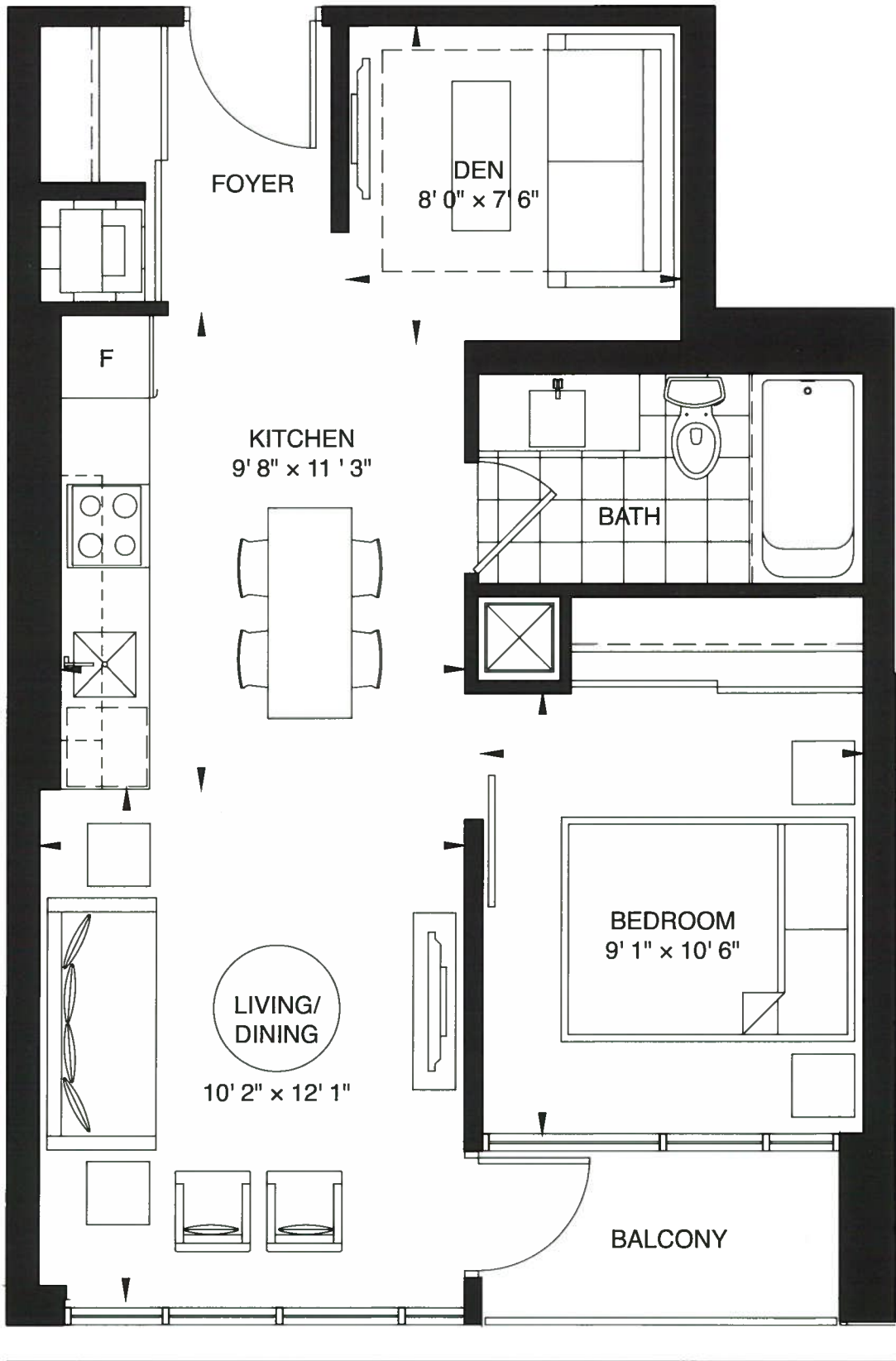


WINDOW CONDITION AT 14TH FLOOR



UPPER TYPICAL FLOOR

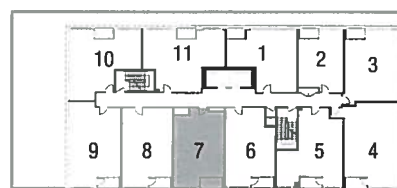
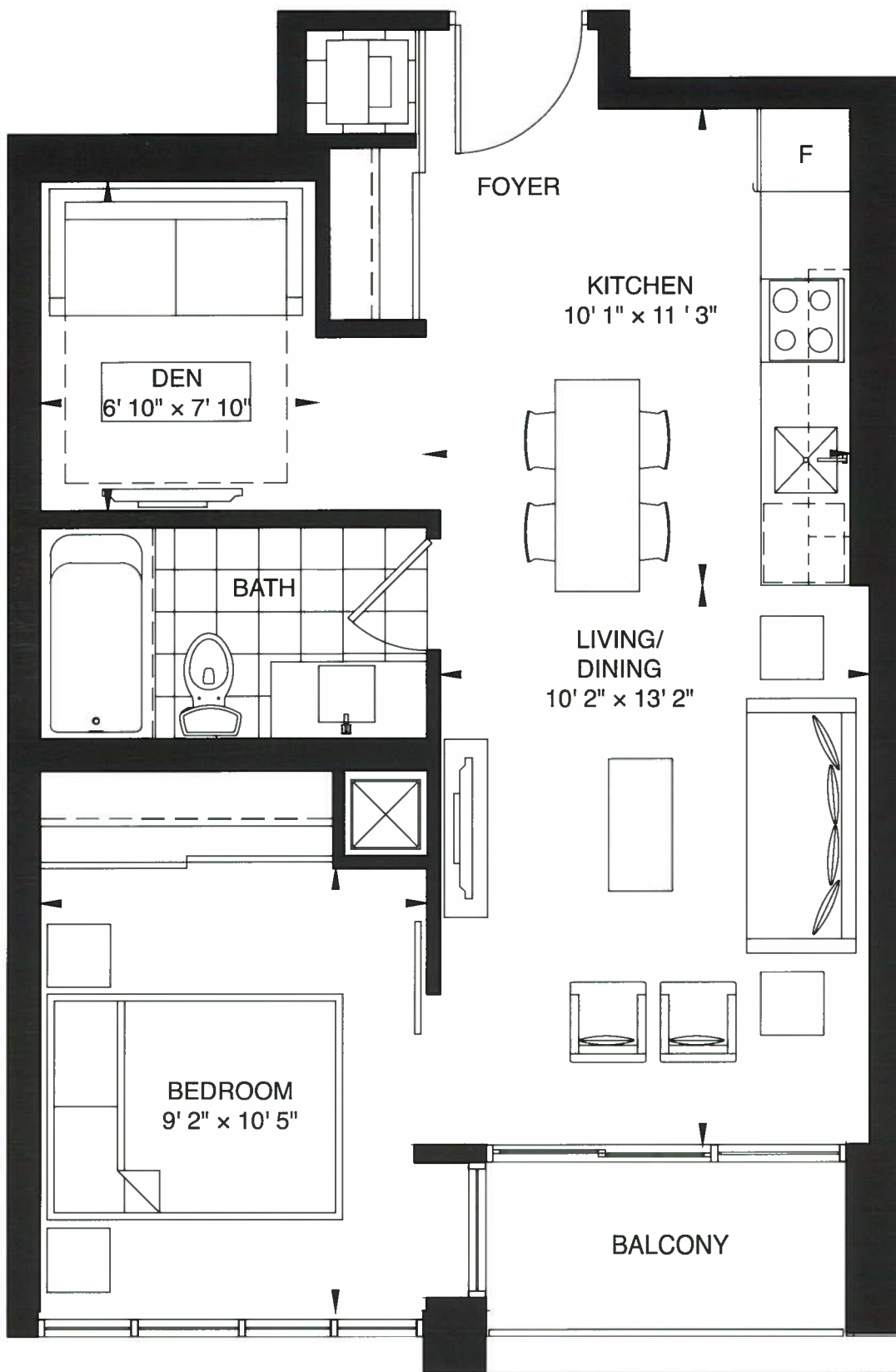
Prices and specifications subject to change without notice. E & O. E. The dimensions shown on this plan are approximate only. Actual useable floor space within the unit may vary from any stated floor areas or dimensions on this plan. For more information on the method used for calculating the floor area of any unit, reference should be made to Builder Bulletin No. 22 published by Tarion.



UPPER TYPICAL FLOOR

Prices and specifications subject to change without notice. E & O. E. The dimensions shown on this plan are approximate only. Actual useable floor space within the unit may vary from any stated floor areas or dimensions on this plan. For more information on the method used for calculating the floor area of any unit, reference should be made to Builder Bulletin No. 22 published by Tarion.

574 sq.ft. | 1 Bedroom + Den



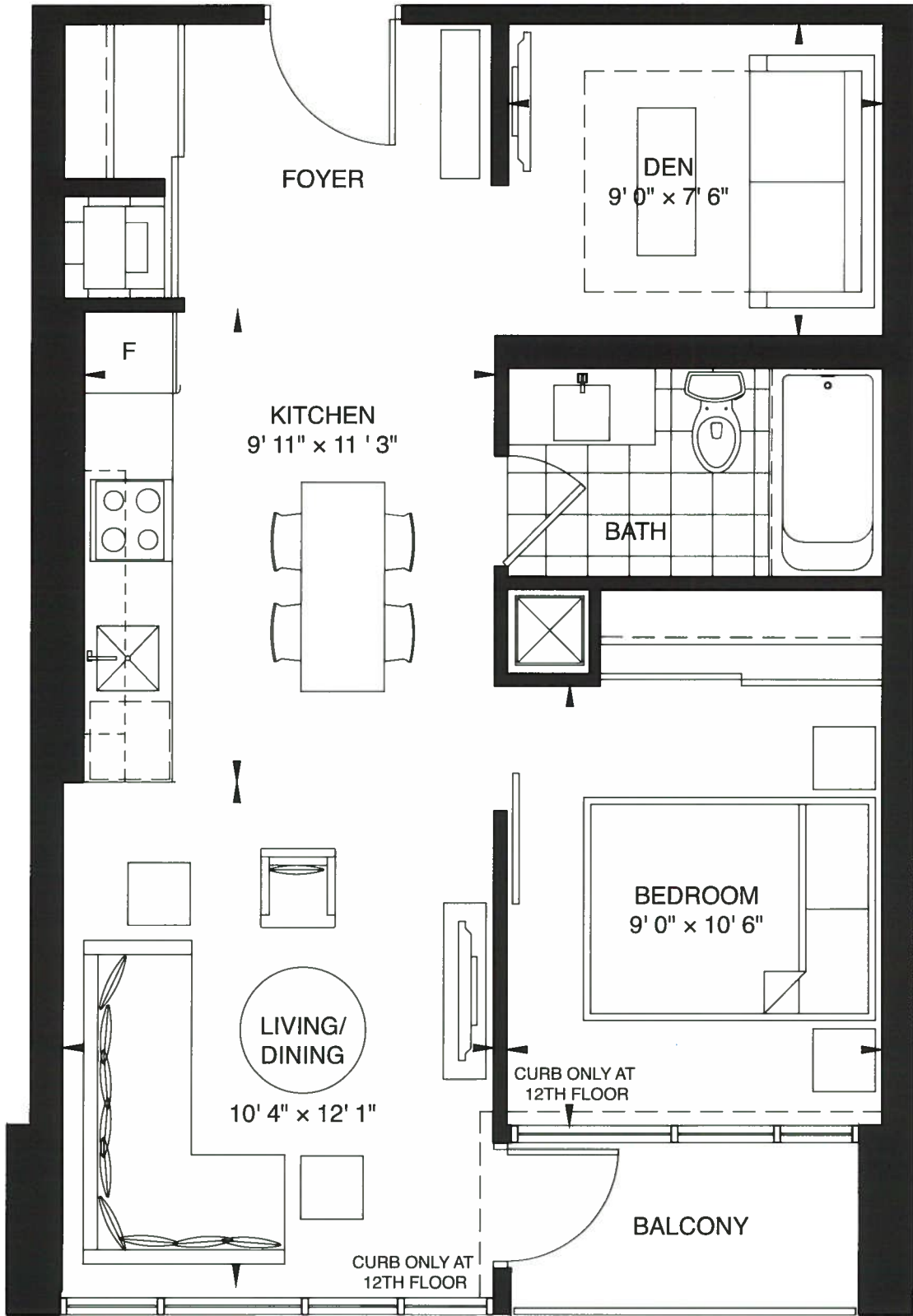
UPPER TYPICAL FLOOR

Prices and specifications subject to change without notice. E & O E. The dimensions shown on this plan are approximate only. Actual useable floor space within the unit may vary from any stated floor areas or dimensions on this plan. For more information on the method used for calculating the floor area of any unit, reference should be made to Builder Bulletin No. 22 published by Tarion.

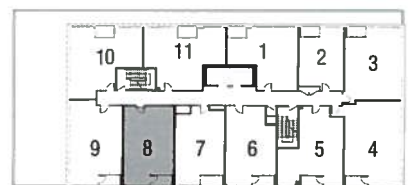
ELM



605 sq.ft. | 1 Bedroom + Den



TERRACE AT 12TH FLOOR
BALCONY AT 14TH FLOOR



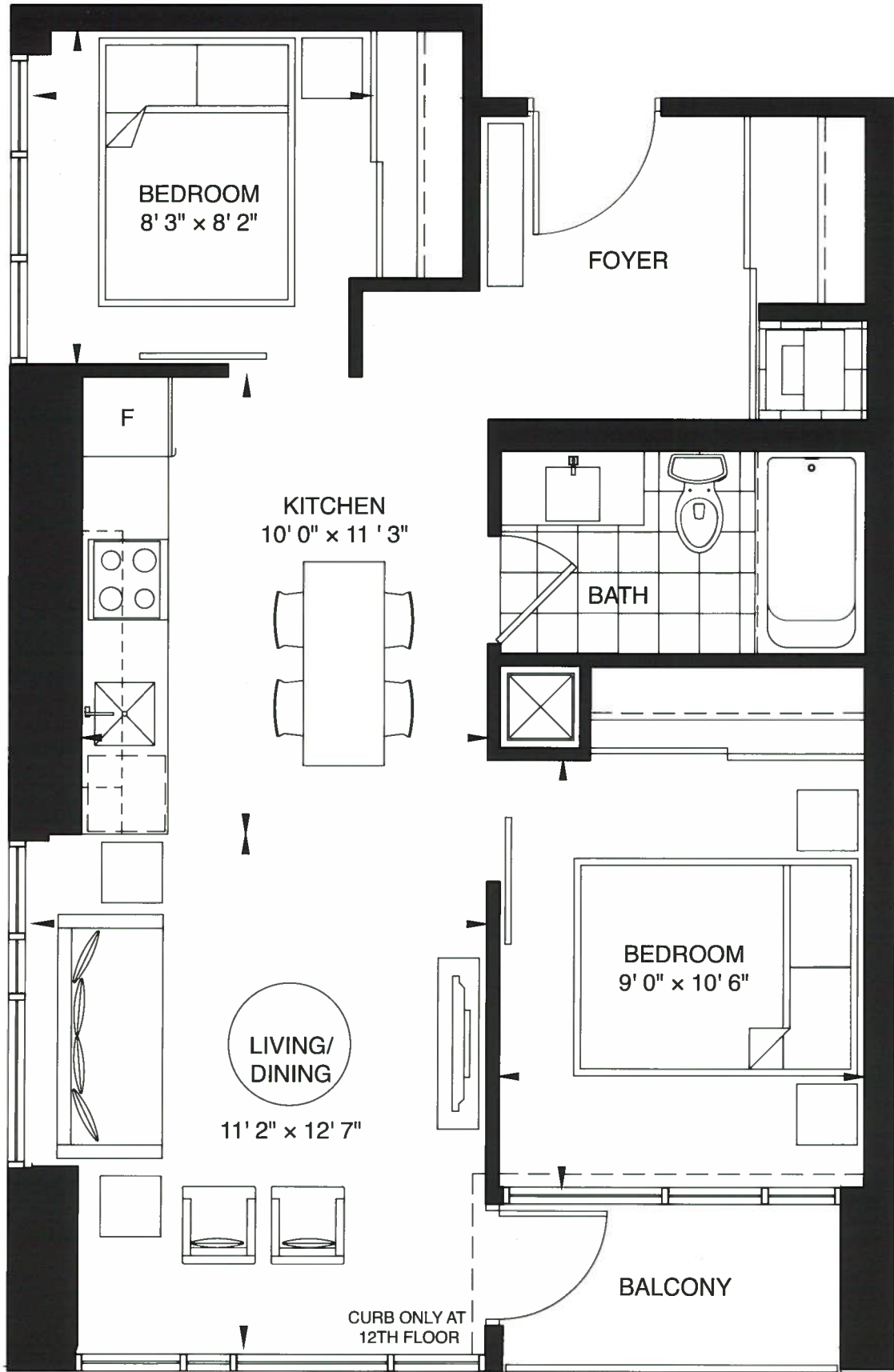
UPPER TYPICAL FLOOR



Prices and specifications subject to change without notice. E.O.E. The dimensions shown on this plan are approximate only. Actual useable floor space within the unit may vary from any stated floor areas or dimensions on this plan. For more information on the method used for calculating the floor area of any unit, reference should be made to Builder Bulletin No. 22 published by Tarion.

GLASGOW

657 sq.ft. | 2 Bedroom



TERRACE AT 12TH FLOOR
BALCONY AT 14TH FLOOR

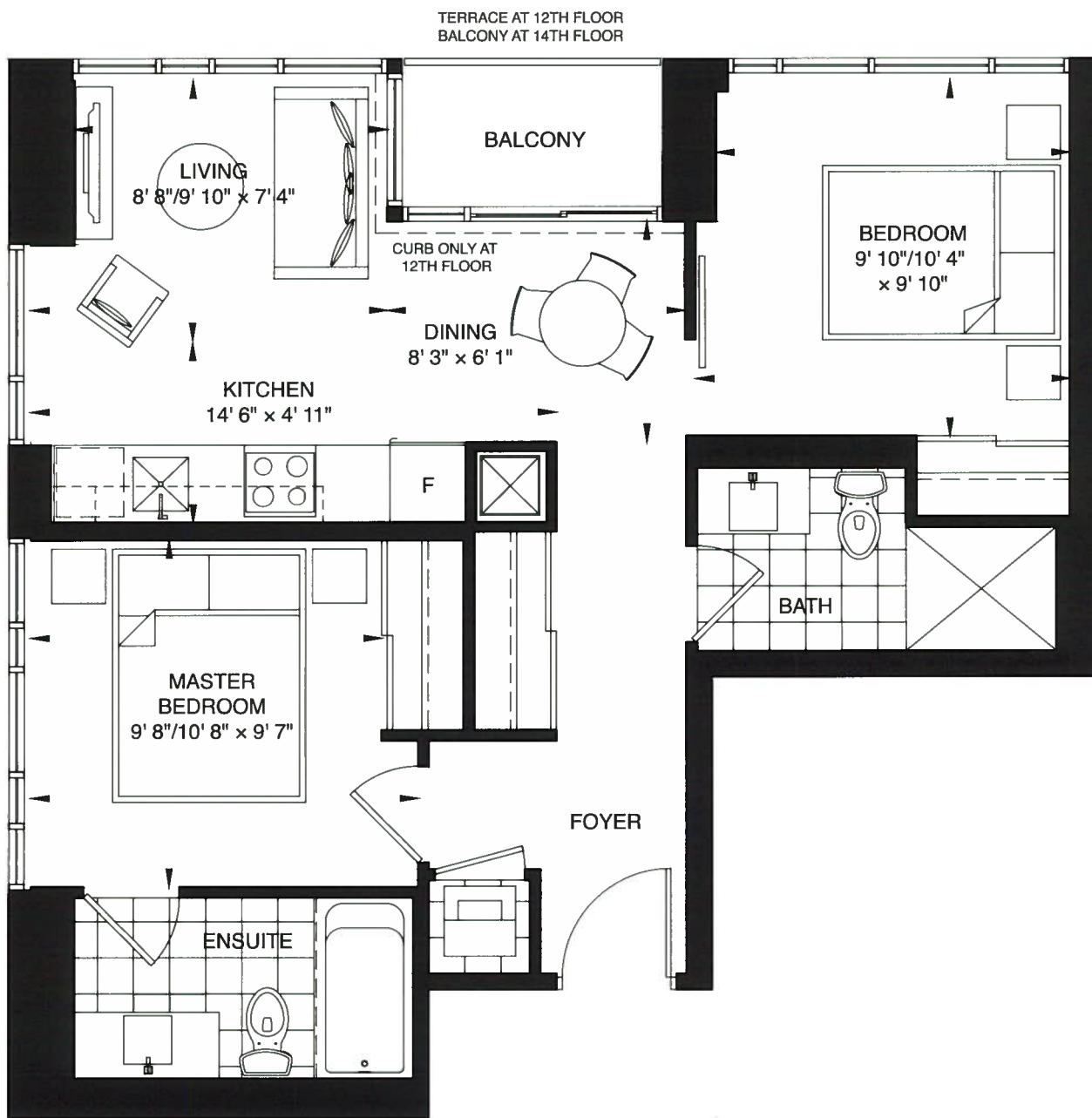


UPPER TYPICAL FLOOR

Prices and specifications subject to change without notice. E & O E. The dimensions shown on this plan are approximate only. Actual useable floor space within the unit may vary from any stated floor areas or dimensions on this plan. For more information on the method used for calculating the floor area of any unit, reference should be made to Builder Bulletin No. 22 published by Fannie.

ROSS





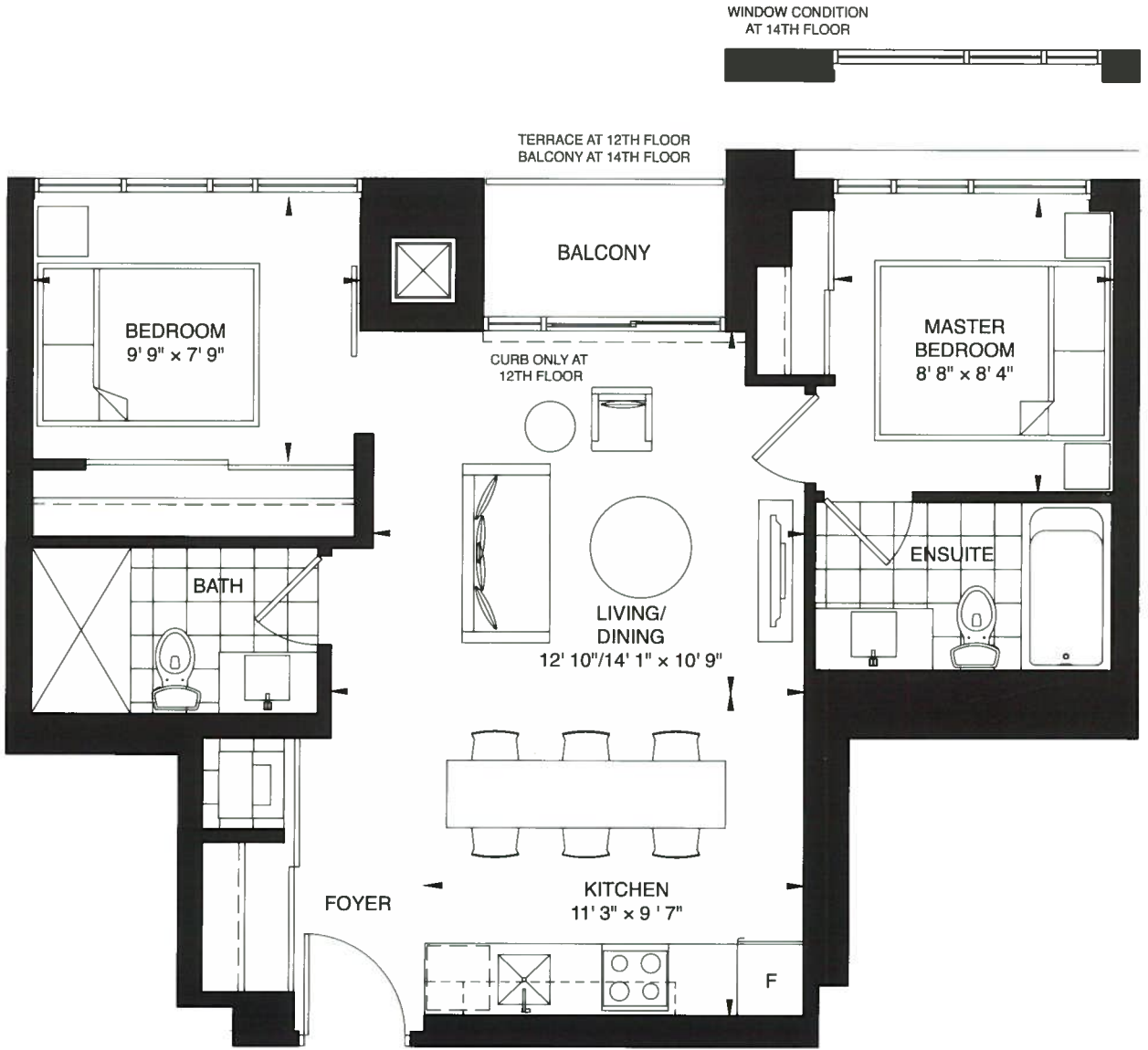
UPPER TYPICAL FLOOR



Prices and specifications subject to change without notice. E.A.O.E. The dimensions shown on this plan are approximate only. Actual useable floor space within the unit may vary from any stated floor areas or dimensions on this plan. For more information on the method used for calculating the floor area of any unit, reference should be made to Builder Bulletin No. 22 published by Tarion.

698 sq.ft. | 2 Bedroom

CROFT



UPPER TYPICAL FLOOR

Prices and specifications subject to change without notice. E. & O. E. The dimensions shown on this plan are approximate only. Actual useable floor space within the unit may vary from any stated floor areas or dimensions on this plan. For more information on the method used for calculating the floor area of any unit, reference should be made to Builder Bulletin No. 22 published by Tarion.